



# AVEVA™ E3D Design Academic Access

---

Giving the innovators of the future access to the engineering design tools of the future

We at AVEVA are committed to working together with universities to shape a sustainable future. We want to bring state-of-the-art 3D industrial design software into the classroom, and into the hands of those who will use it to shape a brighter and smarter future.

AVEVA E3D Design is a multi-disciplinary 3D design platform, enabling clash-free collaboration across engineering services on large projects. It is the global market leader in 3D industrial design for the process plant, marine and power industries. It is easy to use and offers a host of cutting edge, real-world features preparing students for the leap from study to industry.



# What AVEVA E3D Design can do for students and teachers

AVEVA E3D Design is easy learn, to use and set-up, both in the classroom and for remote work. We are eagerly positioned to provide quick, straightforward access for both students and instructors to the world-class, industry-focused capabilities of the platform.

## Ease of learning

- Intuitive user design interface
- Minimal training required to get up and running
- Object-centric data management: Each object designed, such as a valve, pump or pipe has an extensive quantity of attribute and association data, creating tangible assets to aid with student understanding

## Quick start-up with AVEVA Connect cloud access

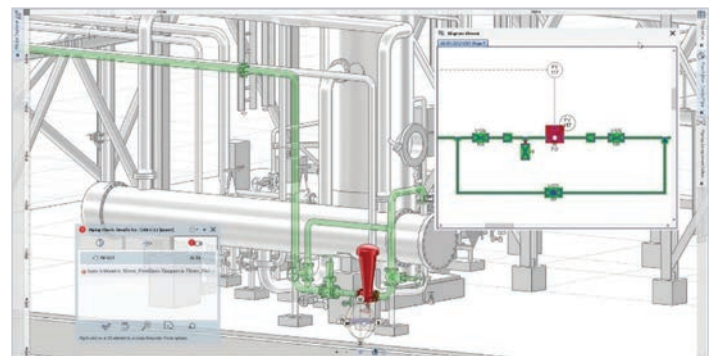
- Accessible from anywhere with a reliable internet connection – the classroom, the lab, the dorm, even from a coffee shop
- Full Licencing as a Service (LaaS) deployment available with no in-house licencing server installation necessary, simply access via a web browser

## AVEVA experience

- All AVEVA university customers are provided with free access to AVEVA Experience, AVEVA's cloud-based e-learning training platform
- Detailed information, training guides and instructional videos accessible anywhere, anytime
- Training modules are available covering the gamut of user experience, from basic introduction through to main deliverables generation

## Real-world problems meet real-world solutions

- Introduces the magnitude and complexity of multi-discipline engineering projects
- Fully supports the design and creation of project material specifications and cataloguing, used extensively in the Chemical, Mechanical and Materials industries
- Change highlighting, tracking and status management for collaborative working, both in the classroom and in the office
- Share configurations, templates, design data and customizations between projects
- Automatic, on-demand generation of accurate drawings and reports directly from the 3D model



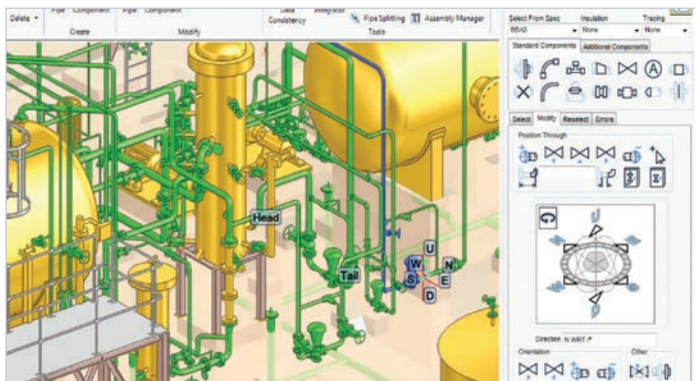
Drafting integrated with model - quickly produce all kinds of scale drawings





### Informing the future of engineering design

- Design, develop and output files for both 3D printing and Virtual Reality (VR) / Augmented Reality (AR) development platforms
- Comprehensive, efficient services clash detection
- Support for integration of laser scan data in 3D model space
- Rule-based automation
- Scalable solution with no limit on project size or complexity



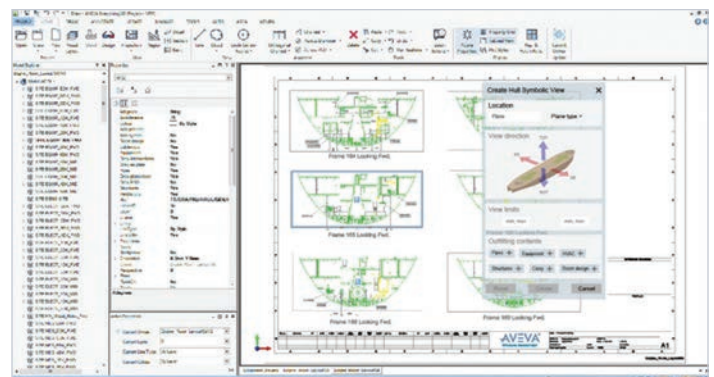
Easy to use, multi-discipline, clash-free engineering design

### Full connectivity with AVEVA software

- Supports direct interoperability with AVEVA's engineering suite of software
- Enables an intelligent link between relevant external solutions
- Ensures intuitive, consistent design data across multiple platforms
- Initial AVEVA E3D Design deployment can be expanded at any time

### Marine design capability

- Class leading marine design capability built in
- The most advanced 3D marine design solution
- Accurate, clash-free hull and outfitting basic design of ships and offshore vessels



Complete, error-free, production-oriented 3D modelling of vessels

## The experience of educating with AVEVA E3D Design

### University of Applied Sciences Kaiserslautern, Germany

“ I worked for different Engineering firms and I always struggled finding university graduates with competence in the plant design process - or at least with an idea regarding the workflow and the interrelation of the individual steps. After my appointment as Professor at Kaiserslautern University, I wanted to change that. AVEVA and PDMS (now AVEVA E3D Design) was my first choice, because it is the state-of-the-art software for plant design.

Our students get the opportunity, not only to acquire theoretical knowledge - working with AVEVA software, they experience a complete engineering workflow. From process design to 3D model and process optimization.

[3D modeling design] software relies on strong and competent support, AVEVA has competent people, who support us in all instances. We appreciate AVEVA's university support, which opens the possibility to use first class software tools without license cost.

AVEVA representative always take the time to listen to our problems, which in-fact differ to those of AVEVA's industry customers, nevertheless we always get support. ”

- Dr Wulf Kaiser,  
University of Applied Sciences Kaiserslautern

## Proven sustainable business outcomes

### BLOM Maritime AS

Construction times cut by 25% through using laser scanning to ensure accurate retrofit

[Read More](#)

### Apply Sørco

15% efficiency savings enabled by integration of laser scan data with the design and draw modules

[Read More](#)

### Atkins

40% reduction in drawing delivery time

[Read More](#)

# Our software drives transformation for 20,000 customers



Energy



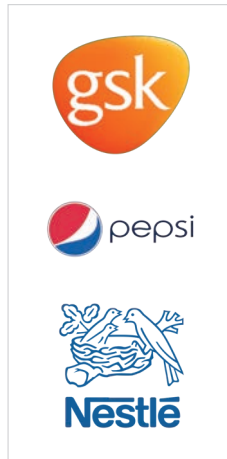
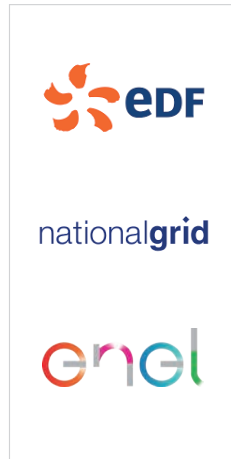
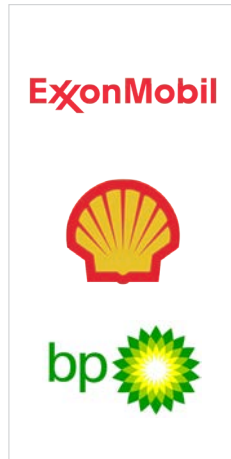
Power



Food, Bev, CPG,  
Life Sciences



Chemicals



Infrastructure



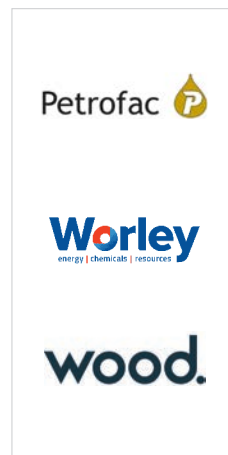
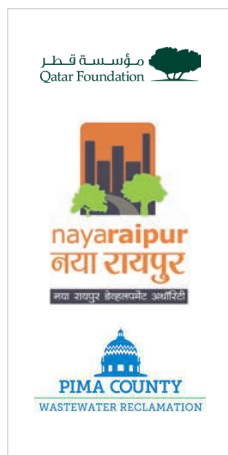
Mining



Marine



EPC



## Shaping a sustainable future together

We aspire to a world where economic growth supports environmental sustainability, with better living standards for the communities where we and our customers operate.

## AVEVA E3D Design enables sustainable design

- Design for efficient use of energy
- Increased process efficiency
- Reduced wastage

Learn more about our sustainability philosophy  
[aveva.com/en/about/sustainability](https://aveva.com/en/about/sustainability)

## Commonly asked questions when considering the use of AVEVA E3D Design for higher learning

<p>How do I justify the cost?</p>	<p>AVEVA E3D Design is world-class 3D modelling software. It is easy to both learn and use, offered at a competitive price to give students early access to the tools of their industry.</p> <p>AVEVA E3D Design has application for use across multiple courses, disciplines and year levels, providing a broad scope for meaningful returns on investment.</p>
<p>How does licensing and product install work with our existing IT infrastructure?</p>	<p>We provide licensing through our secure cloud platform, AVEVA Connect, allowing AVEVA E3D Design to be accessed remotely via internet connection.</p> <p>We have found that cloud licensing is a straightforward, simple and convenient solution for universities and their existing IT infrastructure.</p>
<p>How steep is the learning curve?</p>	<p>“[Our engineers] were amazed at how easy it was to use. Now everyone works on AVEVA E3D, and we use the software on all of our projects.” - Mark Crombie, Discipline Authority 3D Admin at Apply Sørco</p> <p>Free AVEVA E3D Design training resources, including instructional videos, are available to support the introduction and adoption of AVEVA E3D Design.</p>
<p>Where is it used outside of the classroom?</p>	<p>AVEVA E3D Design is the world’s most technologically advanced and powerful 3D design solution for the process plant, marine and power industries. As such, it is used extensively in industry, particularly by Chemical, Mechanical, Process and Material engineers.</p>
<p>What is the impact of AVEVA E3D Design on students’ learning experience</p>	<p>Using an active learning environment, such that AVEVA E3D design helps to facilitate, can enhance the integration between practice and theory.</p> <p>Students are provided with tangible, real-world experience which lays the foundation for excellence in their future endeavors.</p>
<p>Is the experience of using AVEVA E3D Design reflective of the real world?</p>	<p>“AVEVA’s cloud-based and data-centric engineering enables our teams all around the world to work remotely, yet together, on one platform that spans all of our engineering data. It is fundamental for our staff to work in a collaborative way, in real-time, all along the design and build phases. Efficient access to data is key to boost operational performance and achieve our strategic objectives.” - Thomas Cheylan, Projects Performance Director, Veolia Water Technologies</p>

For more information on the AVEVA E3D Design Academic Program, please contact:  
[academic.program@aveva.com](mailto:academic.program@aveva.com)



© 2021 AVEVA Group plc and its subsidiaries. All rights reserved.  
AVEVA and the AVEVA logo are a trademark or registered trademark of AVEVA Group plc in the U.S. and other countries.  
All product names mentioned are the trademarks of their respective holders.