

Digitally transform your mobile workforce

Achieve operational excellence in the palm of your hand with the industry-leading operator-driven reliability solution



Improve reliability, safety and productivity

Operator rounds

- Reduce maintenance costs with early detection of equipment failures
- Supports continuous improvement programs
- Improve production efficiency and identify incident avoidance by capturing key operational data

Maximize wrench time

- Increase labor productivity while reducing rework and backlog
- Reduce maintenance and inventory carrying costs
- Optimize MRO work order planning and execution

HSSE compliance

- Timely scheduling and execution of federal, state, and local regulatory inspections
- Heightened awareness to precursors that could lead to HSSE incidents
- Highly accessible data improves day-to-day compliance tracking and regulatory reporting requirements

Lockout/Tagout

- Prevent unexpected energization, start-up, or release of stored energy
- Prevent injury to employees
- Mobile framework supports the development, documentation and enforcement of LOTO control and release procedures

BYOD

- Enhances productivity by allowing workers to use a device fit for purpose
- Increased worker satisfaction through use of preferred up-to-date devices
- Lower total cost of ownership through increased device options that range from consumer-grade up to Zone 1/2 Haz Loc rated devices



Collect stranded data

- Capture and transform non-instrumented data into contextualized information
- Easily integrate this data to 3rd party systems
- Clearer visibility into the state of the business enabling well informed intelligent decisions

Knowledge transfer

- Digitize, capture, and share expert knowledge to help guide employee development
- Ensure business continuity and minimize knowledge loss due to attrition
- Easily share knowledge across the enterprise

Task management

- Enable efficient and effective execution of mobile workforce tasks
- Improve field worker knowledge and awareness to their environment
- Realize increases in plant safety, availability and reliability

Procedure enforcement

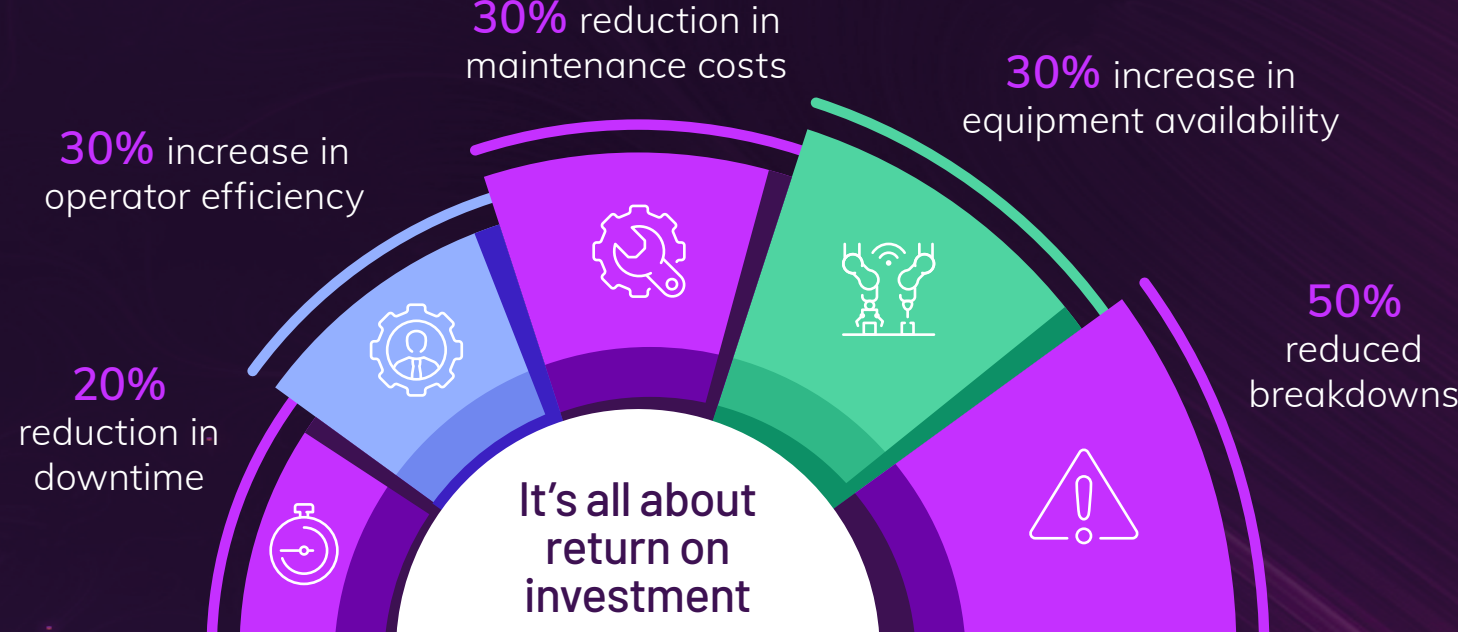
- Facilities consistent use and continuous improvement of best practices
- Ensure predictable and safe work practices by reducing human error
- Enhance situational awareness and effective decision making in real time

Barcode and RFID

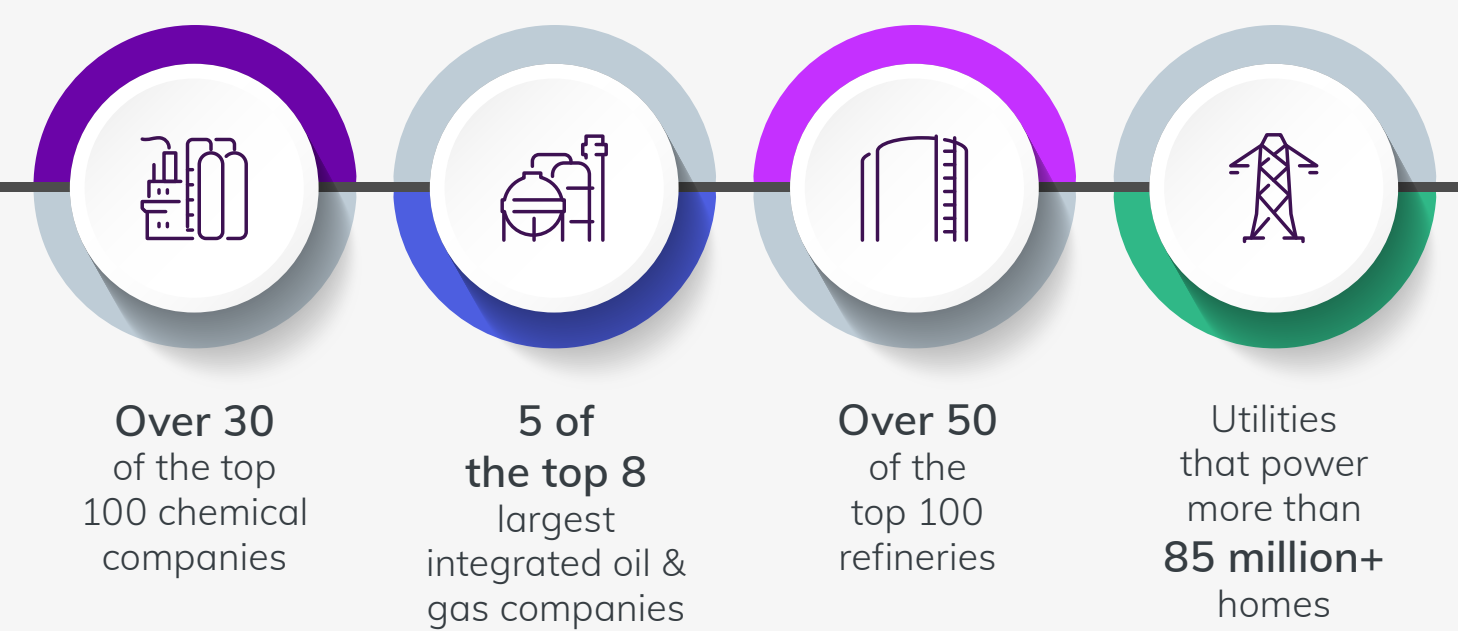
- Improves accuracy and efficiency of task execution
- Provides positive asset identification for regulatory compliance

Using AVEVA™ Mobile Operator has made a major contribution to reaching a plant availability factor above 90%, since it has integrated perfectly with the other innovations added to our equipment.

– Mauro Tassistro, Applications Team Leader, Infineum



Proven technology and industry expertise

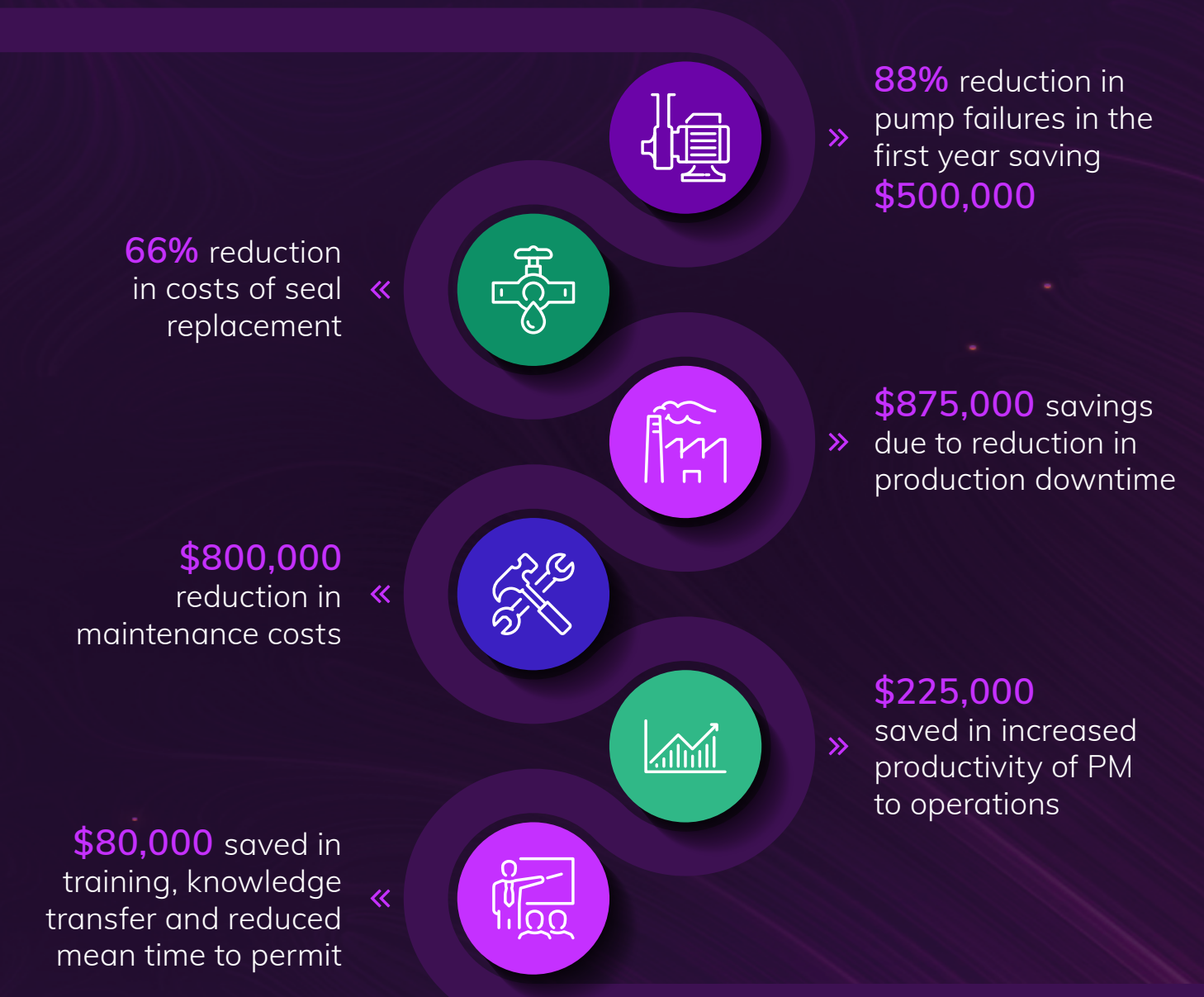


We have received high praise for 100% regulatory records and reporting within our organization. There are no gaps or lost pages, ever.

– Chris Victoriano, Operator Training/Super User, Cornerstone Chemical Company

High performance, great savings

Real customer savings achieved from implementing AVEVA Mobile Operator



For more information, please visit aveva.com/en/products/mobile-operator