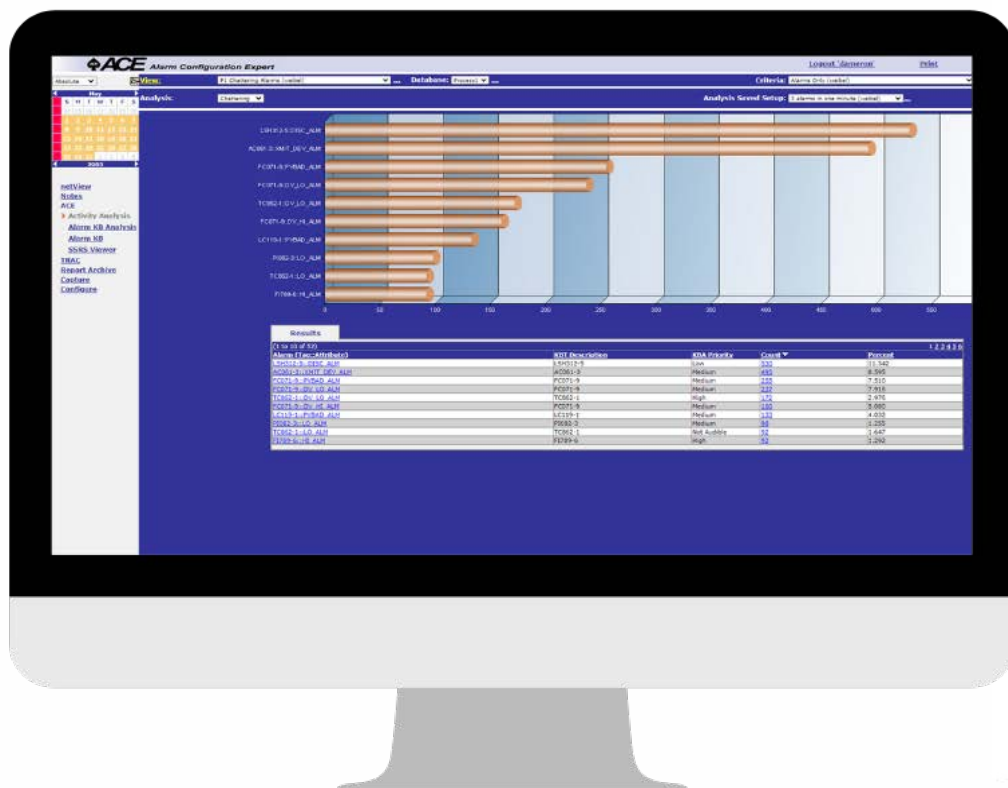


# LOGMATE®

LogMate® is a full-featured alarm management system that is easy to implement and easy to use. It is meticulously designed to support alarm management initiatives with minimal training and virtually zero maintenance.

- Locate and evaluate nuisance alarms
- Design and maintain optimum alarm settings
- Collect a continuous event archive in real-time
- Integrate process trends and events on one graph
- Establish an online operator knowledge base
- Send automatic notifications of important events
- Replace obsolete printers



## Improve alarms.

Drive more value out of your process alarms using the industry-leading LogMate® Alarm Management System. Built on tested and trusted Microsoft .NET technologies LogMate® dominates other solutions with superior features, unequaled speed, stability, and scalability, extremely low total cost of ownership, and easy integration into existing platforms. LogMate® is relied on by the world's leading manufacturers to improve competitive advantage by improving alarms.

## Improve operations.

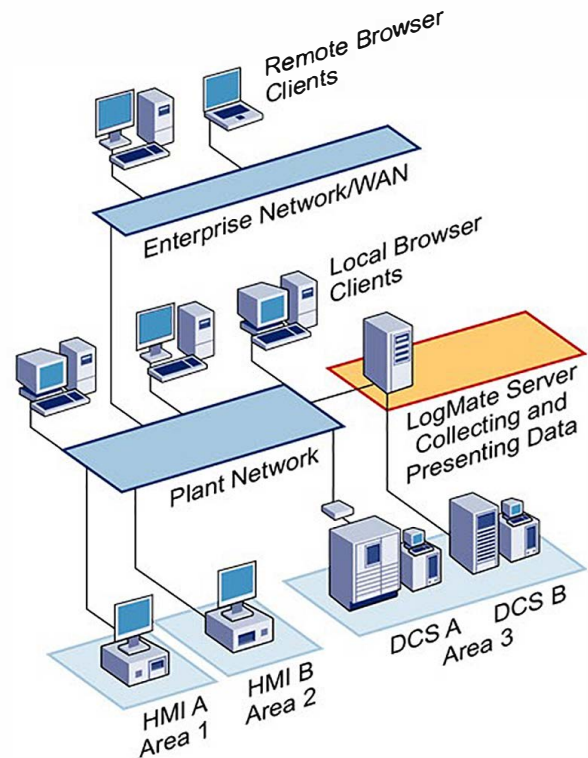
### LogMate AMS: Alarm Management System

LogMate® is the ideal solution for any alarm management initiative. It enables you to locate alarm problems, enforce alarm settings, accelerate incident review, raise alarm visibility, trend alarm KPIs, dynamically change alarm settings, all focused on pushing value through the alarm system by maintaining ideal settings.

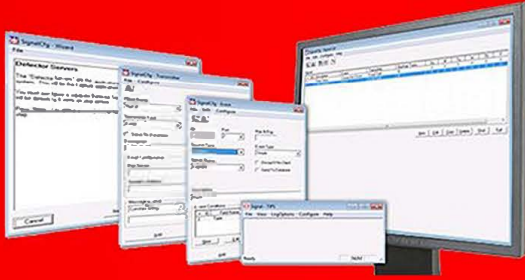
LogMate® processes alarms and events in real-time, archiving them in Microsoft SQL Server® for immediate or historical access. Display, navigation, and analysis are all done through a commonly-used browser, making the full suite available to anyone with network access and authorization.

LogMate® imports configuration settings from the control system to simplify implementation, and to get the alarm management process off the ground more quickly.

LogMate® is compatible with every major DCS and HMI, employing a variety of connectivity options for maximum flexibility and scalability.



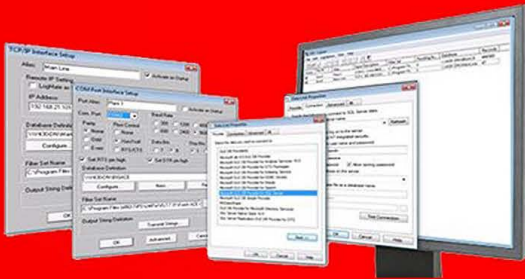
### LogMate® Architecture



LogMate® embraces alarm management best practices as determined by industry organizations such as the ISA® and EEMUA®. LogMate® technology facilitates a variety of alarm management initiatives:

Alarm System Design  
 Bad Actor Resolution  
 Rationalization/Redesign  
 Management of Change

Event Forensics  
 Sequence of Events  
 Upset Visualization  
 Batch Variance



**LOGMATE®**



- Locate and evaluate alarm problems
- See operator behavior relative to alarm activity
- Pinpoint problem areas or instruments



- Trend alarm KPIs for performance visualization
- Graph historian trends with alarms and events
- More effectively research upsets and batch variances



- Collect a continuous event archive in real-time
- View serialized events, historically or in real-time
- Send automatic notification of important events
- Replace obsolete logging printers



- Import and control alarm setting changes
- Compare a proposed design to current settings
- Establish an online operator knowledge base
- Compare your configuration to best practices

# LogMate® Delivers.

Browser-based Interface

Universal Compatibility

Centralized Data Storage

Zero-loss Data Capture

Integrated Administration

Minimal IT Impact

Very Strong Security

Optimized for Speed

Unlimited User Licenses

Local or Remote Access

Enterprise Scalability

Standards Driven

## Alarm management software is not a commodity.

Sometimes, what you see is not what you get. LogMate® delivers alarm management tools to your organization's desktops without a heavy dose of configuration services. It pays to ask some pointed questions when evaluating alarm management options. How long will you have to wait before the software is ready to use? How much work is required to run an analysis or generate a report? Will the software empower anyone to improve the alarm system, or will it require a "specialist"?

A LogMate® system can be commissioned in a day - ask us for references. Our clients are able to improve their alarm systems immediately. There's no wasting time waiting for data to be processed or reports to be written. Ask for a demonstration. Ask some difficult questions. You'll be glad you did.

## Alarm Management questions? Ask TiPS.

"Alarm Management" is a process for ensuring that the information provided to operators is clear, concise, and actionable. That empowers them to better prevent deviations from normal and better recover from abnormal situations. Optimizing your alarm system is a valuable step in improving the effective, efficient, and safe operation of a manufacturing facility.

For more information about alarm management or LogMate®, contact a TiPS representative at **(512) 863-3653**; or by e-mail at **[sales@tipsweb.com](mailto:sales@tipsweb.com)**.

Please visit us on the Web at [www.tipsweb.com](http://www.tipsweb.com).