

## Your One-Stop Manufacturing & Enterprise Integrator



DCS, SCADA & PLC Programming

Data Interfacing Across Islands Of Automation

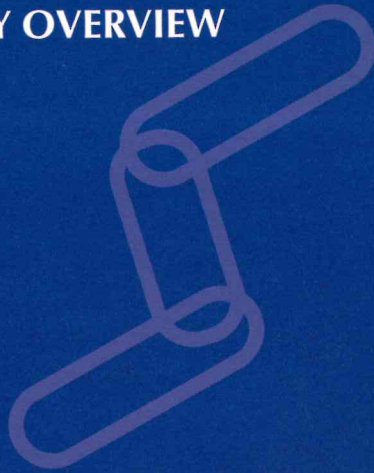
Software Engineering

Database & Information Mining Systems

Advanced Process Controls



## ■ COMPANY OVERVIEW



Plant Werx (pronounced as works) is an industrial information technology company that provides Intelligent Automation Systems that enhance your manufacturing and business processes.

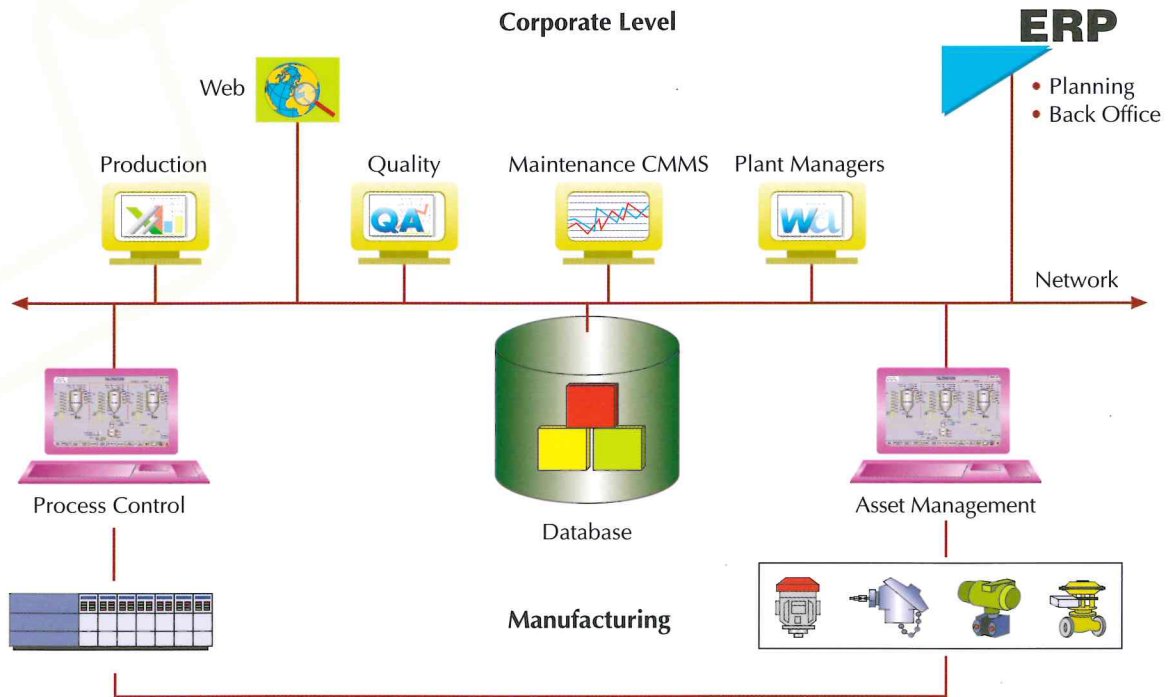
From developing standard automation products to custom designing and building your turnkey manufacturing facility – we will do whatever it takes to help you meet your goals.

At Plant Werx, we have extensive knowledge and experience in:

- **DCS, Scada And PLC Programming On Multiple Platforms**  
ABB, Allen Bradley, Siemens, Mitsubishi, Nais, GE-Fanuc, Vipa, Omron, Sattcon, Wonderware, Intellution, Proface, RS View, Cimplicity etc.
- **Data Interfacing Across Multiple Brand Controllers**  
Modbus, Profibus, Foundation fieldbus, DeviceNet, ControlNet, Canbus etc.
- **Industrial Database And Mining Systems**  
Data historian using industrial SQL / iHistorians with robust and long term storage capabilities.
- **Plant Data Analysis And Reporting Systems**  
Analyse and measurement of plant KPIs using MS Excel, Word and Web-based reporting methodologies.
- **Advanced Process Control And Process Optimization**  
Neural networks and fuzzy logic methodologies.
- **Software Engineering**  
Microsoft.net and Java technologies for enterprise solutions.

# We Enhance Your Business

## Information System Architecture



## SERVICES AND SOLUTIONS

We are recognized experts in the field of automation and control systems because we develop and implement innovative solutions, while our customer like yourself, are the expert in your own field of business.

Our partnering approach is to make you successful by providing you with an efficient and profitable process. Only through partnering can we deliver the best solutions that suit your needs and requirements.

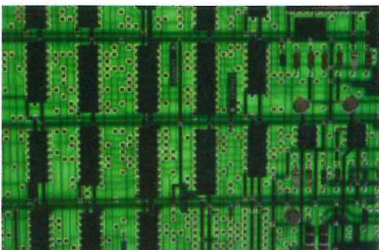
### Hybrid Control Systems, DCS And PLCs

We are able to provide ABB, DCS solutions or PLCs of virtually any manufacture (Allen Bradley, Siemens, Modicon, General Electric, Omron, Mitsubishi etc). With our experience in implementing and installing hundreds of control systems, we have developed an extensive library of performance-proven software modules that can be used off the shelf, or easily modified to meet each customer's unique requirements. With this, we have also successfully applied our capabilities across a wide range of industries.

### SCADA And Human Machine Interface (HMI) Systems

Our team of engineers are proficient in applying a wide variety of SCADA and HMI systems, from simple touch screens to integrating multiple SCADA interfaces, using various packages. (ABB SCADA & Process Portal, Wonderware, Cimplicity, Intellution, Ionics, Citect, etc.)

Our philosophy is to have an open control concept which allows integration to non-proprietary control platforms.

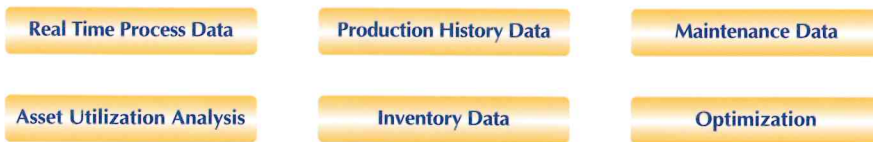
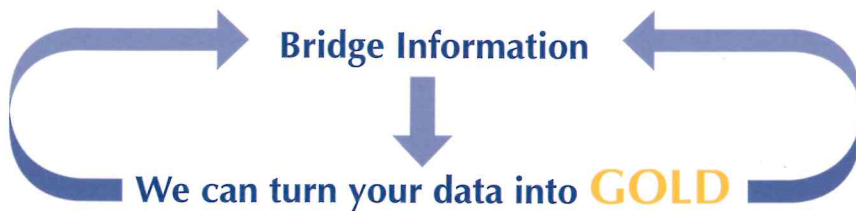




## Data Mining And Optimization

In today's modern manufacturing environment, information is the key to running your plant efficiently. Having the right data to make the correct decisions can reduce wastage and re-work thereby saving you hundreds of thousands of dollars a year.

At Plant Werx, we have the solutions to help you do just that. Advanced process control systems using fuzzy logic and neural networks systems that learn from your process, predict your product quality and also optimize your process. In essence, we make your yields improve by using the least amount of energy and resources while meeting your production specification without the wastage.



## Traceable And Tracking Of Production Reports

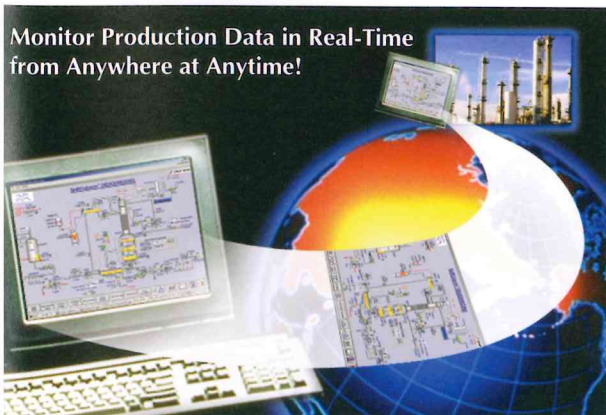
In the food, beverage and pharmaceutical industries, it is a regulatory requirement to monitor, trace and track your production parameters. By integrating industrial database & plant historians into your control system, data can be easily extracted for your audit trail. Information on when, why, how and who did what can be easily gathered with a few clicks of the mouse. Daily production reports of all the plant parameters, material consumption and utilities can also be easily generated. The extensive use of Microsoft's common technologies such as MS Explorer, Excel & Word makes it easy for your people. Furthermore, multiple clients can be installed on PCs in different departments i.e. Accounts, Operations and Sales. This will enable them to have access to the plant database and gather the required data for themselves.

## E-manufacturing And Process Monitoring

Try and picture this, you have multiple manufacturing facilities worldwide and you are sitting at the beach with your laptop viewing your processes in real time. Managing your business from anywhere in the world is just as good as being there yourself.

By using Microsoft.Net technologies, you can do just that. You can query the plant database across the internet and generate the daily production report straight off the server – as if you are there.

Monitor Production Data in Real-Time from Anywhere at Anytime!







■ **CONTACT US**

Website: [www.plantwerx.com.sg](http://www.plantwerx.com.sg)

**Singapore Office**

Plant Werx Pte Ltd  
51 Bukit Batok Crescent  
#07-16 Unity Centre  
Singapore 658077  
Tel : (65) 6316 6560  
Fax : (65) 6561 2210