

# Process Design & Automation Engineering for the world's leading **Industrial Manufacturers**

▶ **Matrix Technologies** has single-source capability for any process, facility, or automation engineering need.

With a professional team of engineering experts, in-depth process knowledge, and a proven project methodology, Matrix consistently delivers superior results on time and on budget.

## Key Facts

- ▶ Established in **1980**
- ▶ **350+** employees
- ▶ Offices located in:  
**Cincinnati**  
**Denver**  
**Indianapolis**  
**Kansas City**  
**Maumee (Toledo)**  
**Minneapolis**
- ▶ Over **\$70 million** annual revenue
- ▶ Projects completed in **45 countries**
- ▶ **87%** of projects are repeat engagements with satisfied clients

## Services

- Industrial Automation and Information Systems
- Manufacturing Intelligence/MES
- Process and Facility Engineering
- Engineer, Procure & Construct (EPC) Services for turnkey execution of large capital projects
- Power System Analysis & Design

## Capabilities

- 3D Design
- 3D Laser Scanning
- Arc Flash Analysis
- Construction Services
- Consulting Services
- Control Systems
- Electrical Systems
- Facilities Design
- ICS Security
- Industrial Automation
- Industrial Engineering
- Industrial Networks
- Manufacturing Intelligence
- Process Design
- Project Management
- Regulatory Compliance
- Safety Services
- System Integration
- Virtual Infrastructure

## Awards & Certifications



## Market Sectors



Oil & Gas



Chemical



Food & Beverage



Consumer Packaged Goods



Pharmaceutical/  
Biotech



Aggregate



Glass



Metals

Maumee | Cincinnati | Denver | Indianapolis | Kansas City | Minneapolis

(419) 897-7200 | [matrix@matrixti.com](mailto:matrix@matrixti.com) | [matrixti.com](http://matrixti.com)

© Matrix Technologies, Inc.



A Better Process for Success®

## Representative **Projects**

▶ **Matrix Technologies** specializes in automation, engineering, manufacturing intelligence/MES, and EPC (Engineer, Procure & Construct) services. The company's expertise has been demonstrated in thousands of successful projects, including:

### **Oil, Gas & Chemical**

- Retrofitted over 3,000 Fieldbus Foundation™ - powered instruments at a major oil refinery in a project to reduce downtime and ease maintenance.
- Developed a custom application to track manual valve positions and eliminate operator errors at an oil terminal.
- Designed a \$45 million specialty chemical facility on a greenfield site in South Carolina.



### **Food & Beverage**

- Designed and built a food production facility for a spice and flavoring manufacturing company.
- Designed and implemented a \$150 million greenfield food plant process control system.
- Retrofitted a 200,000-sq.ft. Kentucky warehouse for food product manufacturing in eight months.
- Designed and installed a 1,500 CPM food production process and packaging line.
- Provided process and electrical design for an alcohol distilling and blending facility.

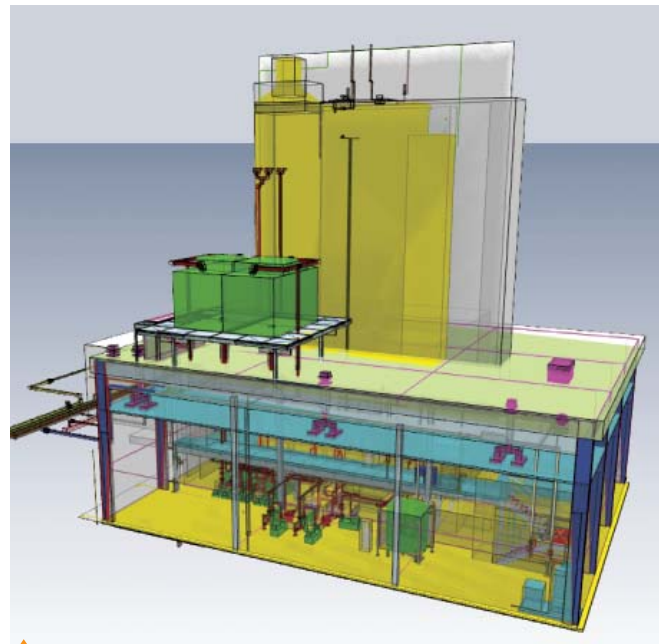
▶ *Matrix develops industrial manufacturing projects from concept to completion for manufacturers in many diverse industries.*

### **Consumer Packaged Goods**

- Upgraded aging control systems in multiple facilities across North America for a major charcoal manufacturer.
- Implemented new blending controls and process design for a home cleaning products manufacturer.

### **Pharmaceutical**

- Designed and implemented a batch control system for a biotech manufacturing facility.
- Designed and implemented a high-availability unified computing system with virtualized server environment.



▶ *Matrix has advanced 3D design capabilities to create accurate models of facilities, processes, and equipment.*