

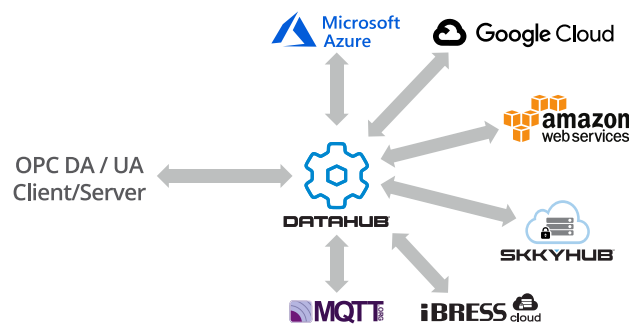


# DataHub<sup>®</sup> IoT Gateway<sup>™</sup>

CONNECT TO AZURE, GOOGLE, AMAZON, OR ANY MQTT BROKER

## Connect to virtually any MQTT IoT service

The DataHub makes it easy to connect your OPC-enabled system to virtually any MES, device cloud, or Big Data analytics platform using MQTT. It comes pre-configured for Azure IoT Hub, Google IoT, and Amazon IoT Core. For any other IoT service, you can customize the DataHub's JSON data format to match that service's MQTT broker.



## Send plant data securely to the cloud

MQTT's publish/subscribe protocol makes a secure, outbound connection to the IoT cloud service. No need to open any firewall ports, and no need for a VPN. The DataHub IoT Gateway also supports Transport Layer Security (TLS), certificate-based authentication, and username/password authentication.

## Integrate real-time OPC data

Leverage OPC UA, the leading Industrie 4.0 and IIoT data protocol—using a secure, real-time connection that maintains the OPC UA data model (which other gateways flatten). You get both OPC UA and DA client and server interfaces, for built-in protocol conversions. The full data hierarchy from the OPC UA server gets faithfully represented in the OPC DA client or MQTT broker.

## Optimize MQTT

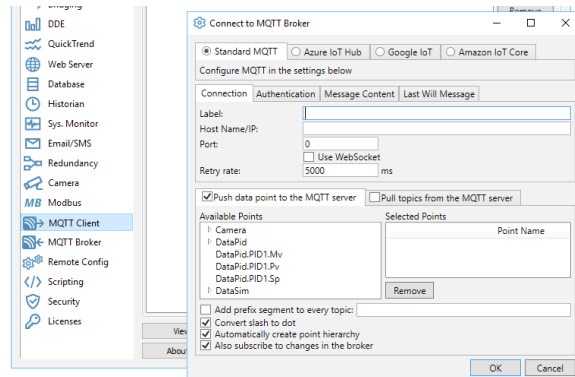
The DataHub IoT Gateway supports MQTT Version 3.1.1, including publish and subscription methods, as well as Last Will and Testament and Quality of Service message delivery. It also offers these additional benefits:

- No point count restrictions
- Automatically discovers all the points from the server
- Eliminates cache latency and stale data, so you always know the data quality and have the most current value
- Multi-threaded interface means that a slow or non-responsive server will not slow down other connections



## Standard Features

- **MQTT Client** – connect to any MQTT Broker
- **OPC DA Support** – connect to OPC DA servers and clients
- **OPC UA Support** – connect to OPC UA servers and clients
- **Data aggregation** – merge data from multiple sources into a common data set
- **Secure Remote Configuration** – configure multiple DataHub installations from one location
- **QuickTrend** – view live, real-time trends for selected data
- **Scripting** – program custom solutions to meet your specific needs
- **Security** – control access and set permissions for users and groups



## Popular Add-on Features

- **MQTT broker** – in-house IoT Hub
- **Data bridging** – connect two or more data sources to share data in real time
- **OPC A&E** – connect to OPC A&E servers and clients
- **Modbus** – connect to Modbus TCP slave devices
- **Database** – read and write data to/from any ODBC database
- **Vine™ Add-in** – access to your process data from inside Microsoft Excel™

## System Information

DataHub supports OPC UA, Classic (DA 3, DA 2, and A&E), as well as Modbus TCP, ODBC, DDE, TCP, HTML, and XML. It runs on the following operating systems:

- Windows Server 2016 (64-bit)
- Windows Server 2012 & R2 (64-bit)
- Windows Server 2008 & R2 (64-bit)
- Windows 10 (64-bit)
- Windows 8.1 (64-bit)
- Windows 7 (64-bit)

## Ordering Information

Product	Code	Description
DataHub IoT Gateway	IOTGAT	DataHub Core features with OPC UA, OPC DA, MQTT client, tunnel/mirror



Skkynet®, SkkyHub™, DataHub®, the Skkynet and DataHub logos, IoT Gateway™, Vine™ are either registered trademarks or trademarks used under license by the Skkynet group of companies (“Skkynet”). Excel™ is a trademark of Microsoft Corp.