

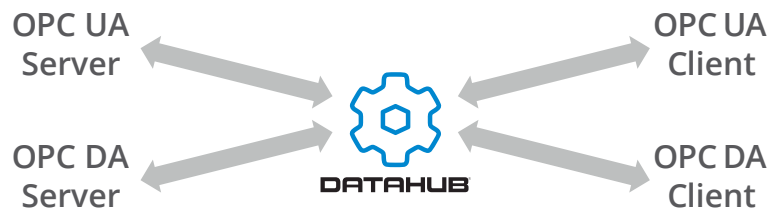


DataHub® OPC Gateway™

OPC UA/DA CONVERSION

Connect OPC UA systems to OPC DA (Classic) systems

Do you want to start using OPC UA today? Now you can seamlessly link your current system to the future with the DataHub® OPC Gateway™, and convert real-time, streaming OPC DA data to UA or vice-versa. Using the Gateway, you can connect any OPC DA server or client to any OPC UA server or client, locally or over the plant network.



A Full-Featured Gateway

The DataHub OPC Gateway provides valuable features that few others do, such as:

- **Automatic discovery** – No need to select all the points to read from the server, just let the DataHub browse the whole data set. If it changes on the next run, the DataHub will figure it out.
- **Maintains UA data model** – The data model stays intact, unlike with other UA/DA gateways. The full data hierarchy from the OPC UA server gets faithfully represented in the OPC DA client.
- **Low latency** – Eliminates cache latency and stale data, so you always know the data quality and have the most current value. A multi-threaded interface means that a slow or non-responsive server will not slow down other connections.
- **Interactive Scripting** – Manipulate your data in real time with a fully integrated, dynamically typed interpreted programming language. You can break up arrays, convert data types, adjust polling rates, create monitoring points, track connections, read in lists of OPC tags, automatically calculate formulas based on data points, and much more.

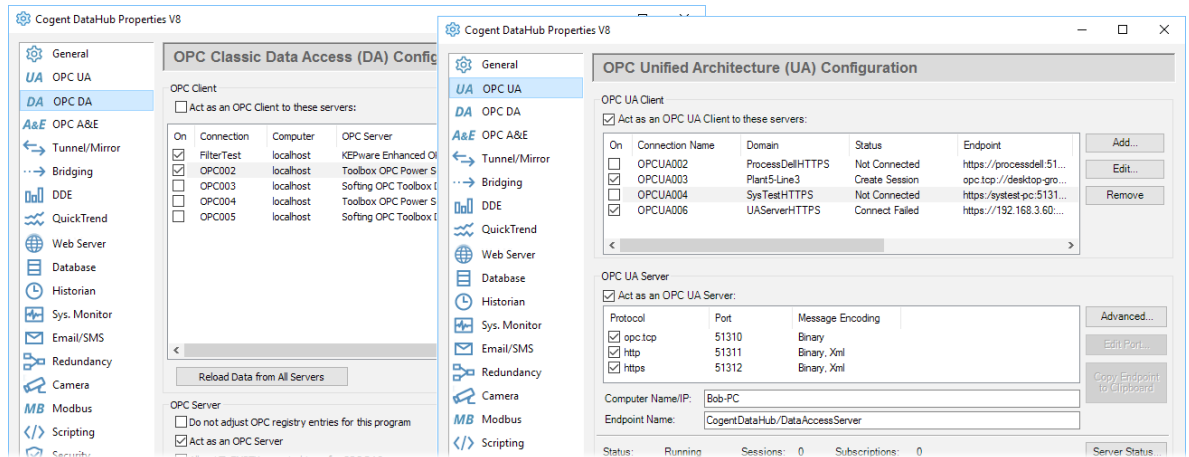
Integrate all data into a single, unified set

Bring data from all sources and any protocol, into a single, unified data set. Any selected subset of this aggregated data can be accessed by clients using a supported protocol: OPC UA, OPC Classic, Modbus, DDE, TCP, ODBC, MQTT, HTTP, XML, Excel, and more.



Standard Features

- **OPC DA Support** – connect to OPC DA servers and clients
- **OPC UA Support** – connect to OPC UA servers and clients
- **Data aggregation** – merge data from multiple sources into a common data set
- **QuickTrend** – view live, real-time trends for selected data
- **Scripting** – run calculations on your live data and manipulate it in real time
- **Security** – control access and set permissions for users and groups



Popular Add-on Features

- **Tunnel/Mirror** – secure networking of OPC data without DCOM problems
- **Data bridging** – connect two or more data sources to share data in real time
- **OPC A&E** – connect to OPC A&E servers and clients

System Information

DataHub supports OPC UA, Classic (DA 3, DA 2, and A&E), as well as Modbus TCP, MQTT, ODBC, DDE, TCP, HTML, and XML. It runs on the following operating systems:

- Windows Server 2016 (64-bit)
- Windows Server 2012 & R2 (64-bit)
- Windows Server 2008 & R2 (64-bit)
- Windows Server 2003 & SP2 (32 & 64-bit)*
- Windows 10 (32 & 64-bit)*
- Windows 8.1 (32 & 64-bit)*
- Windows 7 (32 & 64-bit)*
- Windows XP SP2 (32 & 64-bit)*

* 32-bit operating systems only supported by DataHub versions 7 and 8

Ordering Information

Product	Code	Description
DataHub OPC Gateway	DHGAT	DataHub Core features with OPC DA and OPC UA



SkkyNet®, SkkyHub™, DataHub®, the SkkyNet and DataHub logos, OPC Gateway™ are either registered trademarks or trademarks used under license by the SkkyNet group of companies ("SkkyNet")