

# CXS Communication Server

## Summary

SNMP versions 1, 2 & 3 support

SNMP Traps support

Supports Wonderware System Platform version IAS 3.x and above.

Supports the use of Management Information Base (MIBs) files

Generic and extended OID referencing syntax

Easy configuration of OID items to ArchastrA attributes including properties and data type handling

Automatic ArchastrA attribute generation

© ConneXSoft  
Lohenstrasse 4  
D-82166 Graefelfing  
Germany  
Phone: +49 89 958 990 250  
Fax: +49 89 958 990 290

info@ConneXSoft.com  
www.ConneXSoft.com

## Datasheet for CXS SNMP Device Integration



ConneXSoft is a software development and innovation company based in Munich, Germany. It is a leading specialist in connectivity for Industrial Automation, with particular focus on the Facilities and Energy management markets.

The ConneXSoft CXS SNMP DA Server provides access to network attached devices through the standardized SNMP protocol. The CXS SNMP Device Integration comes with these options:

- Integrated into the Wonderware System with communication DI objects
- As a stand alone OPC 2.05 DA Server
- With an additional CXS SNMP Explorer for advanced discovery features

### Features and Benefits

#### Integrated Discovery

The integrated SNMP browser in the DI objects provides direct access to standard and vendor specific data points.

#### SNMP V1, V2 and V3 Support

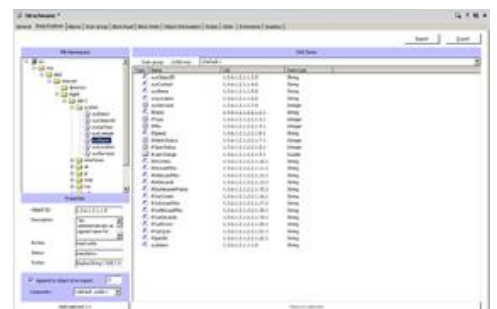
The CXS SNMP DA Server supports SNMP versions 1, 2 and 3. SNMP V3 security and authentication is fully supported.

#### SNMP Traps Support

Configure and receive SNMP traps to monitor network exception conditions.

#### CXS Datacenter extensions

Use the CXS SNMP Explorer Datacenter extensions to create rack PDU profiles and add new server racks without any development effort.



#### Integrated export/ import feature

Import/ export mechanism enables the user to manage MIB file sets within on single file.

#### All in one integration of Application and DI Object

Intelligent DI object reduce the complexity of your application while enhancing functionality.

