

## PRODUCT DATASHEET

---

# Spiral Unified Supply Chain Management: Schedule

## Schedule with Confidence

Ensuring a refinery meets all its requirements while staying close to the operating targets is always a complex task. Schedulers need decision support tools that provide fast, accurate and transparent information on current and future activities, with the flexibility to solve short-term problems and highlight drift from long-term goals. Schedule, part of Spiral Unified Supply Chain Management, allows user to quickly setup and adapt their schedules to meet day-to-day requirements, with the flexibility to meet each user's preferred way of working.

# Key Features

- Easy workflows for defining the schedule, via Gantt, table or through integration quickly add or modify activities
- Manage pipelines; track batches, composition and inventory for crude and products through pipeline systems
- Review the schedule vs. the plan; understand differences and lost opportunities to help meet operational targets
- Optimize unit, pipeline and product blends; ensure long-term feasible and economically optimal schedules for batch and in-line blends
- Easy-to-configure logic for unit operations; rules and targets reduce manual steps and improve consistency between users and between schedules
- Simple roll-forward workflows; integrate with Historians and LIMS systems to quickly reconcile and baseline the schedule; spot problems across time to highlight model, input or plant issues
- Unified within Spiral Unified Supply Chain Management; shares assays and process models with planning, reducing errors and integration workflows. Communicate across the enterprise with full visibility by all stakeholders and easy reporting and visualization of decisions.

Schedule's unified supply chain environment allows users to understand the implications their decisions will have on the business as a whole, letting users concentrate on solving practical problems and make the best use of plant assets. Fast-to-learn and easy-to-use, Schedule's familiar user interface lets users quickly adapt and evolve the schedule as requirements change.

Cloud Services

High Performance Computing

Scalable processing for massive optimization analyses

Staging Server

Integration of plant and execution data

SDK

Integration & automation via .NET & COM

Spiral Unified Supply Chain Management

**Assay**

Feedstock knowledge management  
Netback analysis  
Blend optimisation  
Cargo tracking & alerting

**Plan**

Feedstock selection  
Business planning  
Operational planning  
Master planning

**Network**

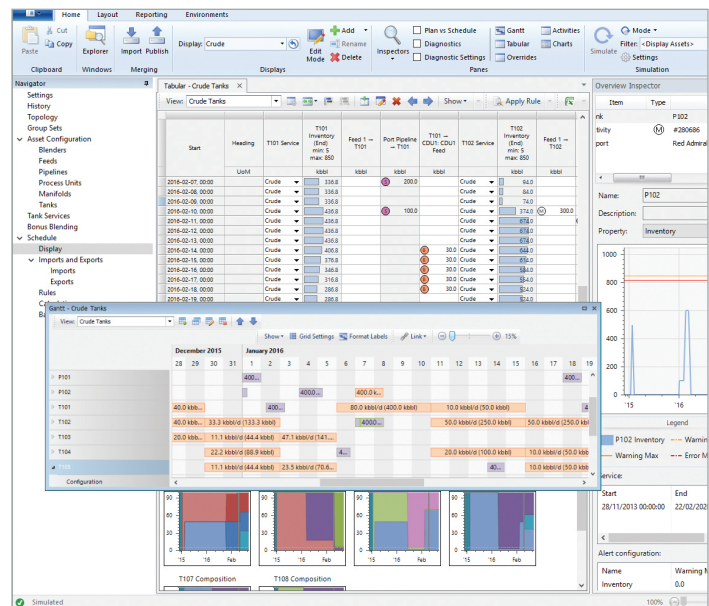
Supply distribution optimization  
Multi-plant optimisation  
Logistics optimisation

**Schedule**

Operational scheduling  
Multi blend optimisation  
Plan vs schedule analysis  
Plan data reconciliation

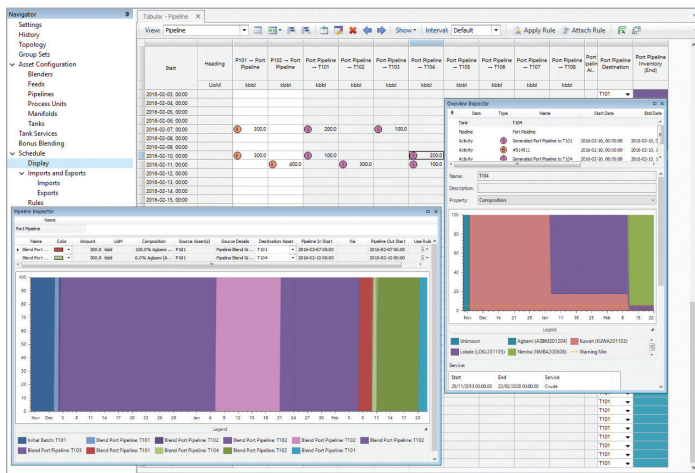
**Process Model Generator**

Base Delta regression from plant and simulator data  
Base Delta model tracking and analysis



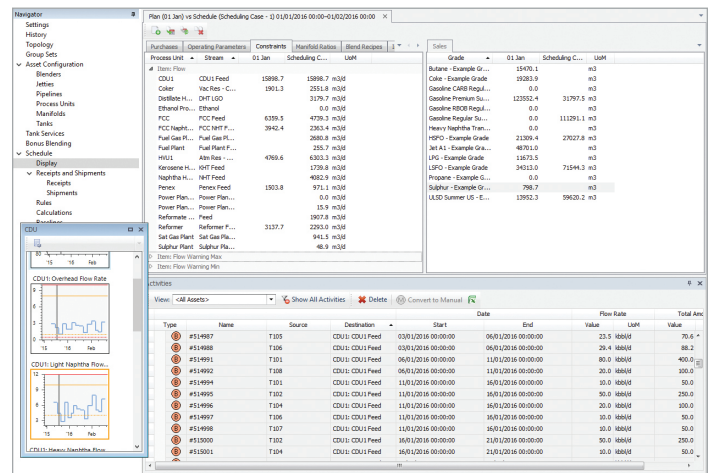
## Easily Work with Pipelines and Blends

Easy-to-configure functionality for process unit, pipeline and product blends allows users to quickly set up, adjust, and optimize single and multiple blend activities. This ensures stable and optimal operations across single and multiple time frames. Economic and operation targeting ensures profitable and realizable schedules. With composition tracking and fast event-based simulation, including both running gauge and recycles, the flexible user interface allows different schedulers to work in tandem, with easy collaboration between each other and across the wider business. Flexible reporting and integration, with execution systems to automate nominations and movements, helps streamline implementation and activity updates.



## Compare Plan, Schedule and Actual

Sharing the same plant definition and mathematical engine as Spiral Unified Supply Chain Management: Plan ensures consistency between different user groups. Share model updates and targets instantly, with easy comparison of plan vs. schedule to highlight potential problems. Compare different timeframes and focus on the biggest differences with flexible aggregation of activities and inventories. Transfer qualities and constraints between the plan and the schedule seamlessly to aid operational planning and real-world reactions to market and plant changes. Integration with plant data via the Spiral Unified Supply Chain Management Staging Server allows quick reconciliation of the schedule to understand differences between schedule vs. actual, and highlights issues with both modeling and execution.



## Spiral Unified Supply Chain Management

Build and share knowledge and experience with Spiral Unified Supply Chain Management's single platform enabling visibility and optimization of the entire supply distribution process. Simple, fast and secure, each stakeholder works side-by-side, with shared understanding and shared confidence in robust and realizable decisions and strategies.

For more information on AVEVA's Spiral Unified Supply Chain Management, please visit [sw.aveva.com/plan-and-schedule](http://sw.aveva.com/plan-and-schedule)

