

# WorkPacks™ PLAN



Product Data Sheet  
v1.3 – 2023-11-21

## KICK-OFF your AWP plan in 1D and 2D!

WorkPacks Plan allows your team to engage in the early development of the Path of Construction, well before establishing a 3D model through project work scope definitions, available documents, and simplified 2D visualizations.

### INTERACTIVE 2D VIEW FOR STREAMLINING PROJECT ONBOARDING

The interactive 2D view gives you the ability to add images, documents, links, and visual binders for clear comprehension of project and package scope, streamlining the onboarding of new personnel onto the project, while keeping project information all in one place in a real virtual construction model (independent of 3D).

### EARLY PATH OF CONSTRUCTION PLANNING

Traditionally, early path of construction planning is scattered across spreadsheets, PowerPoints, and PDF markups that are not collaborative, trackable, or re-usable for downstream planning efforts. WorkPacks POC Planner allows the construction team at site and the project stakeholders to execute ALL early path of construction planning in one centralized application. From identifying and marking up CWAs on plot plans, to building CWP matrices by detailing an AWP Master Index and schedule, WorkPacks Plan enables collaborative work execution that is easily accessible flowing into the detailed planning phases of the project.

or configuration directly in the WorkPacks UI, users generate their entire AWP Master index – CWPs, EWPs, PWPs – including all associated metadata – CWA, Discipline, Field Discipline, EWP to CWP relationship, PWP to CWP relationship, and CWP Types – all at the click of a button! You set the rules, and WorkPacks does the work to get you jumpstarted on your AWP Master Index, while giving you the reassurance that all packages are named and numbered correctly – no more searching for typos in your packages!

### INTERACTIVE REPORTS AND METRICS IN 2D AND 3D

As the AWP master index is auto-generated, WorkPacks allows users to visualize AWP package data by overlaying information on the corresponding intelligent 2D plot plan markups. This includes CWPs (and corresponding start dates), BOQs, documents, tags, and more! With robust filter features, as well as project views, users can harness your data, how you need it and when you need it, in a very intuitive manner!

### AUTO-GENERATION OF THE AWP SCHEDULE

WorkPacks enables users to populate some basic rules and parameters for sequencing and durations, and at the click of a button, auto-generate their entire AWP schedule. Rather than manually linking predecessors to successors, POC iterations and timing can be processed in minutes! It also generates Construction Requirement Dates (T-minus) for E & P deliverables for each CWP.



CWP Overlays on 2D Plot Plan



4D Path of Construction Planning

### AUTO-GENERATION OF AWP PACKAGES & METADATA

WorkPacks Plan enables users to AUTOMATE their AWP Master Index creation and tracking process. Whether through an excel sheet upload,

# WorkPacks™ DELTA



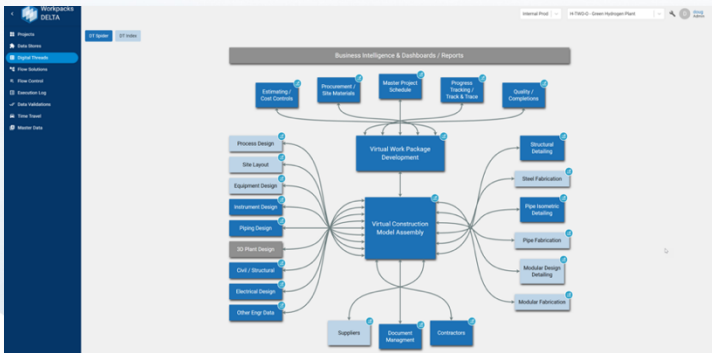
Product Data Sheet  
v1.3 – 2023-11-21

## Interfacing with EPC Systems Digital Threads

WorkPacks Delta orchestrates the EPC Systems Integration for AWP using the AWP Digital Threads, along with a suite of highly proprietary and confidential business logic micro-services.

### DIGITAL THREADS

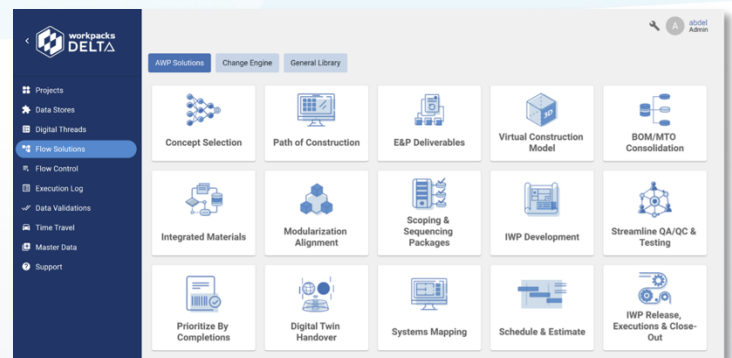
WorkPacks Delta fosters EPC Systems Integration for AWP by leveraging AWP Best Practice of Digital Threads. It connects project stakeholders across various platforms, collecting and aggregating data from disparate systems. Using proprietary business logic micro-services, it curates and transforms data, optimizing it for construction planning, execution, and operations.



Digital Threads

### FLOW SOLUTIONS

Automate data curation and workflows via customized low-code to no-code Neo Flow Solutions. Customize and build ad-hoc workflows for curating project data and/or automating data flow through project tasks using high-level workflows. WorkPacks Delta comes with pre-configured out-of-the-box Flow Solutions to process project data sets interfacing with various EPC systems such as scheduling systems, document management systems, 3D Engineering design systems, materials management systems, procurement systems, progressing systems, and vendor applications. Simplify the user experience of processing data through WorkPacks Delta!



Flow Solutions

### REVISION CHANGE MANAGEMENT

WorkPacks Delta's change engine offers project teams complete visibility over all data revisions and transmittals throughout a project. This feature allows for easy tracking, validation, comparison, and rollback of data versions, ensuring optimal control over project data consistency. Leveraging cutting-edge delta lake technology, WorkPacks Delta simplifies data management in your project's timeline.

### DATA VALIDATION AND TIME TRAVEL

WorkPacks Delta allows you to automate data validations across all Digital Threads and data flows, ensuring project data is verified regularly. It immediately flags invalid data, helping to rectify errors in real-time. The system checks schedules against various resources like P&IDs, engineering lists, and 3D models to identify gaps and ensure alignment across all project stages. With its version comparison feature, you can retrospectively analyze any digital thread, ensuring comprehensive project oversight.

# WorkPacks™ BUILD



Product Data Sheet  
v1.3 – 2023-11-21

## WORK PACKAGE planning, creation, & management ALL-IN-ONE!

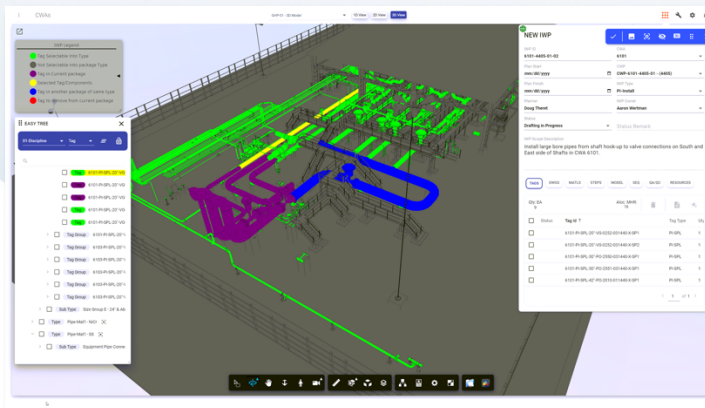
WorkPacks Build offers an automation tool for the creation of the Work Packages Release Plan based on package type, purpose, and user-specified rules.

### PACKAGE TRACKING IN 1D, 2D, & 3D

Track the readiness and progress of your packages in 1D and 2D. If there is a 3D model, the already defined packages can be seamlessly translated to 3D.

### GRAPHICAL AND NON-GRAPHICAL WORK PACKAGE CREATION

Harness the power of intuitive graphical and non-graphical work package creation in WorkPacks in a centralized location. WorkPacks Builder covers all levels of package creation, from basic packaging using snapshots, images and mark-ups, to graphical packaging using 3D, and non-graphical packaging using tag lists for Civil and Earthworks, Foundations and Concrete, Structural Steel, Piping, Equipment, Electrical, Instrumentation, and auxiliary disciplines.



Creating Graphical Packages in the Builder 3D View

### AUTO-POPULATE IWP CONTENTS BY UTILIZING AWP DIGITAL THREADS AND AUTOMATED DATA LOADING

Project Data processing, validations, and revision handling are key aspects of a successful AWP implementation. WorkPacks comes with predefined data pipelines that are guided by the best practice Digital Thread library adopted by the Construction Industry Institute (CII). Users can automate and orchestrate data flows via seamless connections across Engineering, Procurement, Fabrication, Vendors, and Construction through Commissioning and Startup for all packaging and project visualizing needs. WorkPacks mitigates the traditional need of searching for drawings and BOMs or calculating

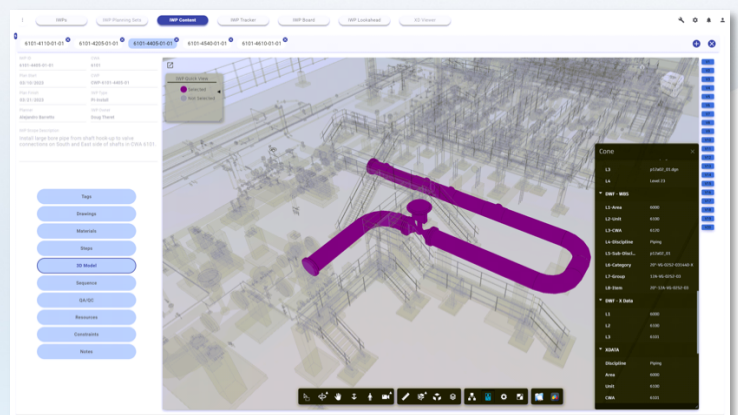
manhours and work steps to make packaging a breeze. Automate your processes via WorkPacks' Digital Threads.

### NEXT GENERATION PACKAGE TEMPLATES AND PUBLISHING

WorkPacks Next-Gen Package templates can be deployed across the entire project, or specific scope such as contractor or discipline. Publishing work packages is very intuitive and user friendly in which users can mark up digital copies and collaborate directly through WorkPacks.

### WORK PACKAGE RELEASE PLANS

As you build work packages, quickly and efficiently sequence, schedule, and assign them to field personnel in a Work Package Release Plan directly through WorkPacks.



Centralized Digital IWP Contents Viewing and Model Navigation

### DIGITAL WORK PACKAGE VIEWING

Why only have access to a digital PDF of a Work Package? Access digital Work Package contents at any time in WorkPacks. WorkPacks enables project team to access tags, drawings, BOMs, work steps, progressing, manpower, ITRs, Constraints, and IWP/CWP subset models directly in a browser, or through the mobile app. Quickly fly through your work package subset model simply by selecting the work package. Enable visibility into the full data set by giving all stakeholders the opportunity to view attributes, select components, and colorize the model in a centralized location with the rest of the package contents.

# WorkPacks™ ANALYZE



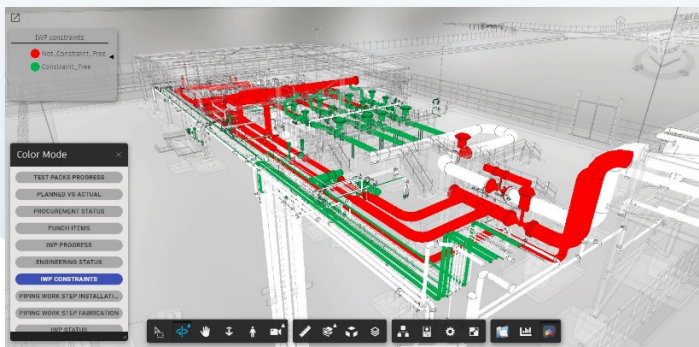
Product Data Sheet  
v1.3 – 2023-11-21

## Transforming Data into Decisions!

Visualize Success, Optimize Performance:  
WorkPacks Analyze Transforms Data into Dynamic AWP Insights and Intelligence.

### ACCESSING FULL WORK PACKAGE CONTENTS AND COMPONENT STATUS VISUALIZATIONS

Package scope, contents, progress, and dependencies can all be monitored and controlled through the WorkPacks Advance module, enabling control and visibility needed to get the job done. This includes customizable status visualizations, that can read input data in real-time as it is provided from engineering, procurement, contractors, fabricators, or craft personnel the field.



3D View with IWP Constraints Status Visualization

### ROBUST SET OF OUT-OF-THE-BOX REAL-TIME REPORTS AND DASHBOARDS AT THE PROJECT AND PORTFOLIO LEVEL

WorkPacks Advance provides a robust set of out-of-the-box Power BI dashboard reports that take into consideration project needs at various stages, while also accommodating different levels of oversight. The dashboard is filterable by project, discipline, WBS, contractor, timeframe, and other options to zero in on what YOU want to see. Project wide reports include KPIs, Progress, Productivity, Performance, Budgeted and actual hours, total packages, etc.; Path of Construction reports include WP Readiness, Releases, CWPs by Contractor, BOQs, etc.; IWP Planning, Release, and Execution reports include detailed accounts by discipline, package types, status, metrics on package constraint clearance and package close out, progress curves, package skyline, and more! All data that comes through your project environment is surfaced in an easy to access dashboard.

### AWP SCHEDULE 4D SIMULATION

Seamlessly review your POC iterations across the entire project or specific areas with WorkPacks 4D Simulations. Color code your model over time in 4D with statuses including "In Progress", "In Lookahead", "In Closeout", and "Complete". No more bogging down the system when running a 4D model live, FLY through your 4D model in WorkPacks smoothly and efficiently!

# WORKPACKS PRODUCT FUNCTIONALTY

The WorkPacks next-gen solution enables owners, EPCs, and constructors to harness project data into effective work packages and to drive information flow and productivity.

## WORKPACKS PLAN

- CWA definition over 2D Plot Plan
- Interactive 2D Plot Plan and Package boundary visualization
- Interactive Gantt charts for project schedule viewing
- Early Path of Construction Planning
- Auto-generation of CWPs, EWPs and PWPs
- Auto-generation of AWP Activities and Schedule
- Required on Site Dates and Tracking Capabilities through a Time-Board
- AWP Schedule visualization on Plot Plan
- Interactive reports and metrics overlaid on 2D plots
  - Tags
  - BOM
  - Documents

## WORKPACKS DELTA

- Revision Change Management
- Digital Threads
- Data Validation across all data sources
- Seamless Integration of EPC Systems
- Time travel to compare any revision of any data set against the latest
- AI and ML to support automation processes in WorkPacks
- Real-time data updates and reports
- Low Code to No Code Neo Flow Solutions to manage the data
- Simplified User Interface for data management
- Support Digital Twin development.

## WORKPACKS BUILD

- Graphical and Non-Graphical Work Package Creation
- Auto-Generation of package content: Snapshots, Docs, BOM, Tags, Worksteps, Manhours.
- Next-Gen Package Templates
- Batch package publishing by Discipline, Template, etc.
- Work Package Release Plan
- Lookahead planning (3-week +)
- IWP resource assignment
- 4D Work Package Sequencing
- Kanban Board for Work Package Tracking
- Constraint Management
- Auto-Constraint Clearance
- Field and Office-Based Work Package Progressing down to the work step level

## WORKPACKS ANALYZE

- Managing a portfolio of projects at an enterprise level
- Status Visualization
- Project Schedule 4D visualization
- AWP Dashboard, Reports, and KPIs
- S-Curve
- Planned vs actual
- Productivity

## A POWERFUL DATA INTEGRATION PLATFORM

Project Data processing and validation as well as revision handling is a key prerequisite for a successful AWP implementation. The WorkPacks data management module comes with predefined data pipelines that are guided by the standard Digital Thread library adopted by CII. It also allows the admin and data experts to create their own flow solutions that can be deployed as project specific data pipelines.

The Workpacks data pipelines come loaded with capabilities to process, query, and validate raw data, while storing all revisions in a Big Data infrastructure based on modern delta-lake technologies. This functionality simply does not exist in other applications.

Implement a solution  
that deeply addresses  
**YOUR DATA NEEDS!**



[www.workpacks.com](http://www.workpacks.com)



[info@workpacks.com](mailto:info@workpacks.com)