



## CUSTOMER CASE STUDY

---

# Amcor boosts production line performance with real-time data

Amcor - [www.amcor.com](http://www.amcor.com)

Industry - Packaging

## Challenges

- Lack of visibility into operational data
- Manual data sharing and reporting led to inaccurate information
- Micro-stops and other downtime events led to production losses

## Solutions

- Deployed AVEVA™ Manufacturing Execution System and AVEVA™ System Platform to improve real-time visibility of production data and increase equipment efficiency
- Used CONNECT to aggregate event and process data from multiple plants in the cloud, delivering key performance and decision-making information
- Deployed AVEVA™ Advanced Analytics to predict and notify about failures and quality anomalies

## Results

- Improved OEE by 2% YoY in blow molding by capturing micro-stops
- Improved production cycle time by 3%
- Increased visibility of equipment efficiency and changeover effectiveness
- Gained full visibility of asset utilization and energy performance
- Reduced downtime by 1-2% through AI-driven analyses of operational data

**AVEVA**

Innovative new solutions like AI, digital twins, and predictive analytics carry significant promise, but they aren't the only tools delivering better equipment performance. As Carlos Paredes, Automation Manager at Amcor, says, "Let's talk about what regular mortals can do."

Amcor, a global leader in developing and producing responsible packaging, already had a traditional SCADA system for its 23 facilities that was capturing a lot of data. The problem was that the company wasn't getting enough value out of that data. There was a lack of visibility, standardization, and automation. Operators were still grabbing a piece of paper to record SPC levels. Manual data sharing and reporting were slowing down operations and leading to inconsistent or incorrect information. Everyone was working on the same solution—trying to calculate OEE—but they were going about it in different ways. Operators were creating different objects, templates, and visualizations. Ultimately, these disparate approaches led to data silos and inefficient operations.

"We were just capturing a tremendous amount of data, putting it into our historian, and there was a very minimum value."

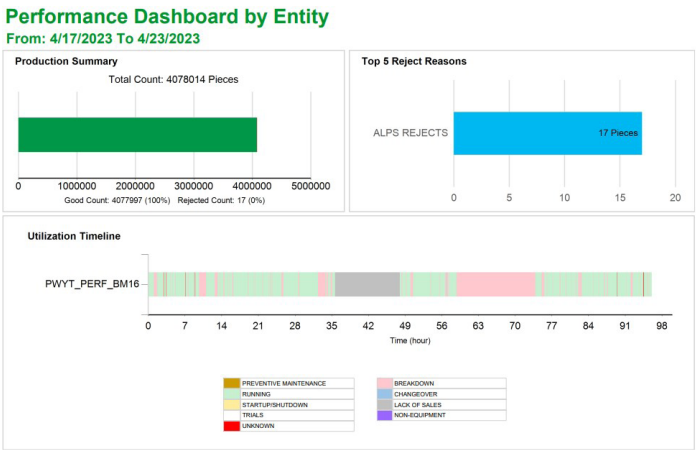
Carlos Paredes  
Automation Manager, Amcor

### Building a foundation to improve efficiency

Amcor develops and produces responsible packaging—both rigid and flexible—for food, beverage, pharmaceutical, medical, home, personal care, and other products. It operates out of 218 sites worldwide in 41 countries. The CEO of Amcor has committed to developing all Amcor packaging products to be recyclable or reusable by 2025. To reach this target and deliver sustainable packaging at a minimum cost, Amcor needed to find new ways to drive better line performance.

Taking OEE as their primary metric, Paredes and his team set out to build a standard for how to measure line performance consistently across their plant facilities. First, they consulted with the company's current SCADA control users to see how they were using the current system and what they needed to operate more efficiently. They wanted to involve the company's own operators and engineers to nurture and grow internal talent and expertise, putting the right tools in operators' hands without taking the fun away from in-house system engineers.

The result was what Amcor—with a nod to AVEVA's solution of the same name—calls "Unified Operations." Paredes and his team used AVEVA Manufacturing Execution System on top of AVEVA System Platform, formerly used as a traditional SCADA system, to build an MES suite at the edge that integrates with their PLCs. This layer of MES enabled teams to consistently measure and track production events data. They created metrics that combined energy efficiency data with production counts to finally get a meaningful measurement of energy performance. Performance dashboards contained validated real-time data, providing complete visibility of asset performance.



A performance dashboard shows production counts, as well as a breakdown of downtime reasons and equipment utilization data.

## Improving OEE with real-time performance data

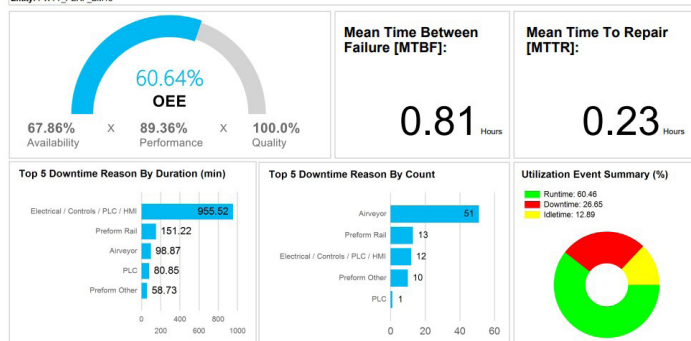
There are two main activities Amcor looks at when measuring production efficiency: injection molding and blow molding. The company had been losing money by not being able to detect cavitation and monitor how plants were blocking cavities. Operators were seeing a lot of variance in cycle time. If a machine is producing 96 parts per ten seconds, say, and machines have cavitations of ten parts blocked, that adds up at the end of the day. By being able to look at cycle time variance against a standard of how the machines should be performing, operators are now able to see when those metrics are off and work to identify and solve the issue. Overall, Amcor has seen a 3% improvement in production cycle time by looking at this real-time cavitation data.

Another efficiency metric Amcor looks at is micro-stops in blow molding. When the company was operating mainly with manual recording, operators weren't tracking every second of a machine's micro-stops, which meant that downtime data wasn't accurate. Over the course of a shift, a machine might have 45 minutes of micro-stops. Again, that time adds up. Being able to see that downtime is accurately captured automatically every 20 seconds, maintenance teams can now address issues and gain quick wins in efficiency. Using this system, the company improved OEE by 2% through capturing these micro-stops in blow molding.

### Performance Dashboard by Entity

From: 4/17/2023 To 4/23/2023

Entity: PWYTT\_PERF\_BM16



Real-time visibility of OEE that includes top downtime reasons and provides data about availability and performance of machines as well as quality of the product.

## A data foundation to drive growth

Amcor now has a unified interface to manage scheduled and unscheduled downtime. It captures every stop from machines, which increases machine performance and the quality of its packaging. Operators can be held accountable for downtime events since real-time performance data is being captured at the edge and visualized. Preventive maintenance and changeover effectiveness have increased. With full visibility of asset utilization and energy performance, operators can make sure that when new lines come in, they're SCADA-ready and run consistently based on the platform's efficiency metrics. The commissioning of new assets is automated and standardized, too.

Operators no longer present disparate, inaccurate data. Standardized nameplates, naming conventions, graphics, and user interfaces ensure that everyone's speaking the same language. This standardization makes it easier to incorporate new digital tools like analytics and AI. They've now defined an architecture for enterprise reporting and analytics. Training and nurturing internal competencies are built into this approach as well. Any time a new operator or engineer comes on board, they are trained on the same tools, and everyone can drive continuous growth in how these tools are used.

"Every time there's a new order, we track that order. We feed it into our SCADA system. We track what the standard should look like, and then we tie it to the machine to see how we're running against the target."

Carlos Peredes

Automation Manager, Amcor





## Avoiding downtime with predictive analyses

In 2024, Amcor engaged in a CONNECT Lighthouse project, a pilot program, to assemble event and process data from multiple plants in the cloud for enterprise visualization, analyses with generative AI assistance, and to predict asset failures and quality anomalies with AVEVA Advanced Analytics. The successful Lighthouse engagement helped Amcor further decrease downtime by 1-2% through the use of AI-generated insights and the correlation of different operational data types.

The Amcor team now has an ERP system that integrates and optimizes production processes based on standardized real-time data visibility.

### References:

Paredes, Carlos. "Amcor: Enterprise analytics and visualization of MES/process data" [aveva.com/en/perspectives/presentations/2025/amcor--enterprise-analytics-and-visualization-of-mes-process-data](https://aveva.com/en/perspectives/presentations/2025/amcor--enterprise-analytics-and-visualization-of-mes-process-data)

They've built a sustainable program that will allow them to grow their business at their own speed, utilizing internal competencies as well as leveraging the expertise of partners like AVEVA.

With this new foundation, Amcor is well on its way to meeting its sustainability objective and achieving "astronomical savings [at enterprise scale]—tens of millions of dollars annually."

[Watch the full presentation](#)