



Everybody on the same page

Maximize Your Digital Twin Efficiency

Integrating Assai with your Digital Twin streamlines document management, enhances operational performance, and establishes a single source of truth for all asset information, providing a complete overview of documents and data.



■ Unlock The Power



In today's fast-paced energy industry, staying ahead means leveraging every advantage. Integrating Assai with your **Digital Twin solution** is more than just a smart move.

Assai's easy and robust integration capabilities enhance the functionality of your Digital Twin, streamlining document management and boosting operational efficiency.

As the market-standard DMS, Assai is the ideal, indispensable complement to a Digital Twin. It's more or less a strategic necessity, establishing a single source of truth for all asset information, providing a unified and complete overview of documents and data.

■ Our Mission

Assai empowers the energy industry with cutting-edge document control solutions. Our software guarantees the well organized execution of critical projects and operations, providing unmatched reassurance and efficiency. Since 1996, our mission has been to enhance every customer's projects, fostering better teamwork and contributing to a safe, sustainable and happy future for all.



■ What To Expect?

Accuracy is crucial for success. Integrating Assai with your Digital Twin prevents unnecessary errors and saves tons of time and costs.

When everybody is on the same page, your document management, asset management, and integration processes not only become simpler but also much more effective.



■ Key Benefits

01

Enhanced Document Management

02

Optimized Asset Management

03

Streamlined Integration

01

Enhanced Document Management

- **Seamless Metadata Retrieval**

Automatically extract and populate document metadata from Assai into your Digital Twin for effortless data consistency.

- **Efficient Document Revisions**

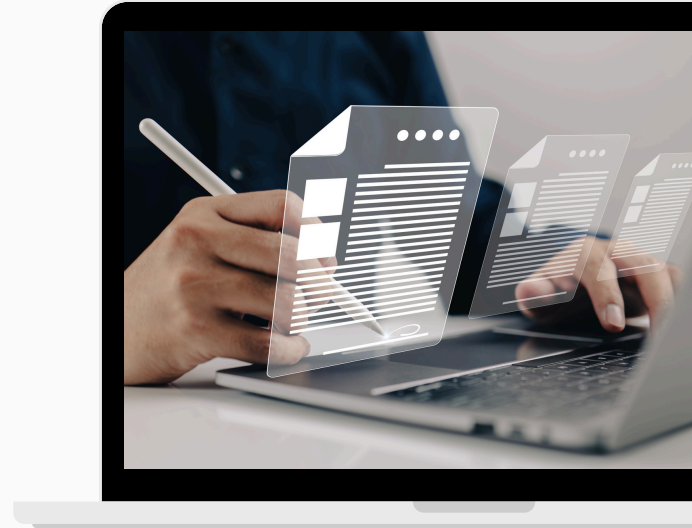
Manage and update document revisions directly within Assai. The Digital Twin can retrieve the latest file, specific metadata, and document-to-tag relations to stay fully synchronized.

- **Quick Access to Files**

Download and reference specific document revision files directly from Assai, reducing time spent searching for critical information.

- **Document-to-tag relations**

Effortlessly create, manage, and sync document-to-tag relations between Assai and the Digital Twin solution. Users can search directly or via a visual asset hierarchy.



02

Optimized Asset Management

- **Precise Asset Item Updates**

Utilize Assai to create or update asset items, maintaining data accuracy and completeness.

- **Streamlined Asset Hierarchies**

Efficiently manage parent-child relations between asset items for precise hierarchy representation and organisation.

- **Automatic Syncing**

Establish document-to-tag relations in Assai or allow the Digital Twin application to scrape and return these relations. Automatic syncing ensures seamless integration and data consistency.

Streamlined Integration



- **Direct Access Links**
Create direct links to Assai's detailed information and files, ensuring you always have access to the latest data without duplication.
- **Secure Single Sign-On (SSO)**
Enhance security and the user experience by integrating Assai with SAML-based login systems, enabling direct access using your Windows credentials (for example).

■ Assai Improves The Entire Operational Workflow

As the central hub for all document-related data, Assai ensures consistency and accuracy across your organization. Seamlessly integrated with your Digital Twin, it automates data synchronization, reducing errors and saving time. Its robust API enables real-time data exchange, making sure everybody is on the same page.

With Assai's powerful linking capabilities, you can easily create direct links to documents and asset details for enhanced accessibility and operational efficiency. We simplify access to critical information, ensuring you always find what you need. Updates from your Digital Twin reflect immediately in Assai, keeping your data current. With direct, easily accessible links to documents, Assai optimizes your entire operational workflow.

■ The Assai Model

Assai's flexible integration model supports bi-directional data exchange, focusing on the crucial document-to-tag relationships for your assets.

From the Digital Twin, documents in Assai can be directly linked or accessed with a click. Limited, relevant metadata, can be displayed within the Digital Twin to provide context to the documents linked to a tag. Newly identified tags in document files are automatically integrated, maintaining a synchronized and accurate dataset.



■ Futurize Your Processes



Enhance decision-making, ensure compliance, and boost safety with instant access to vital documents and asset information.

Optimize project handover processes and operational readiness, all while saving time and costs through efficient information management. When everyone has access to the same information and works with the same ambition, memorable results are achieved, making work even more enjoyable.

Are You Ready?

Discover how Assai can easily integrate with your Digital Twin solution.

Together we elevate your operations!

**Let's get
in touch**

Contact Us

sales@assai.nl

Visit Our Website

www.assai-software.com

