



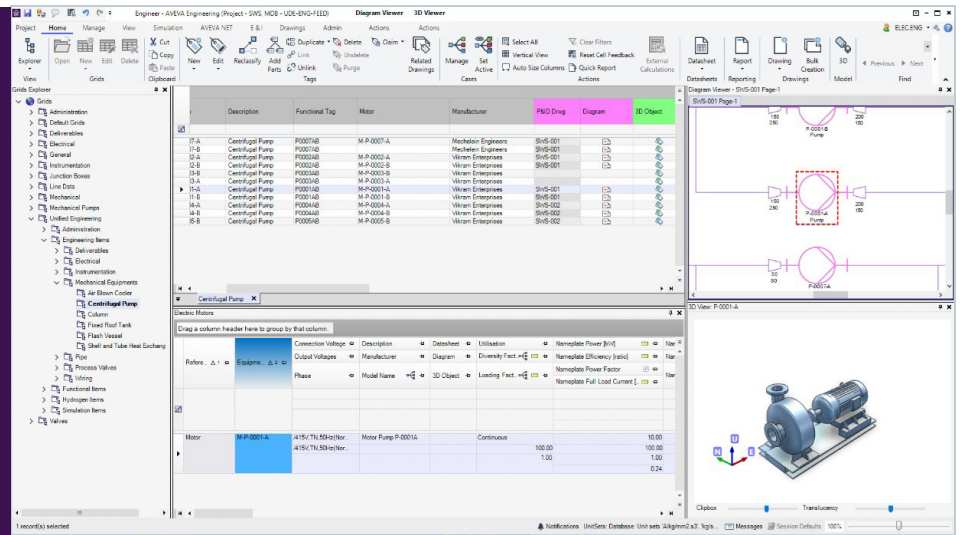
## PRODUCT DATASHEET

---

# AVEVA™ Electrical and Instrumentation: Create and manage high-quality electrical and instrumentation data and deliverables with multi-discipline teams

AVEVA Electrical and Instrumentation is an engineering authoring tool where engineers and designers can quickly and effectively produce high-quality electrical and instrumentation designs and deliverables. Share discipline-specific data and design with project teams and provide real-time collaboration between electrical and instrumentation project disciplines.

AVEVA Electrical and Instrumentation is part of our next-generation **AVEVA™ Engineering**, where you can deploy a single, seamlessly integrated solution to manage engineering data and deliverables across a common data platform. On our secure industrial cloud platform, **AVEVA™ Connect**, you can deploy projects rapidly while maintaining model and execution flexibility.



## The challenge

Complex capital engineering projects demand a sophisticated approach to electrical and instrumentation data that is integrated with all other engineering data and deliverables.

Teams need to work across disciplines and locations to take a truly integrated, data-centric approach to information management and ensure consistency and accuracy.

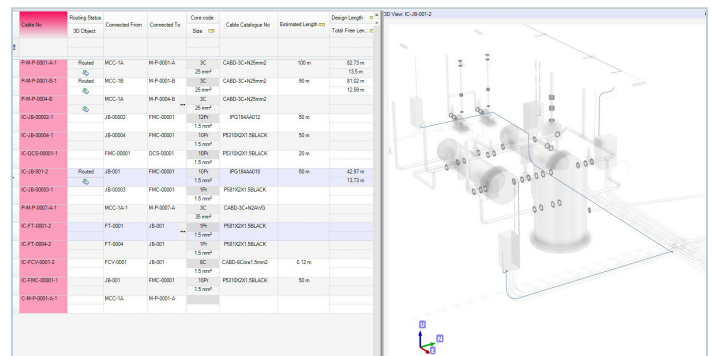
Create high-quality project deliverables using feature-rich discipline functionality that seamlessly integrates with other project disciplines within a familiar, controlled environment.

When used as part of AVEVA Engineering, engineers and designers have access to a one-stop-shop of multi-disciplinary engineering design capabilities. Holistic project design allows users to share data seamlessly as they work within a single environment.

## Features

### Unified electrical and instrumentation engineering

- Project disciplines operate in a common data-centric environment.
- Use common configurable data models.
- Create complex design drawings containing both electrical and instrumentation objects.
- Share a single platform for a truly data-centric approach.
- Access user-friendly, configurable data management and modeling tools.
- Rigorously control and manage change.

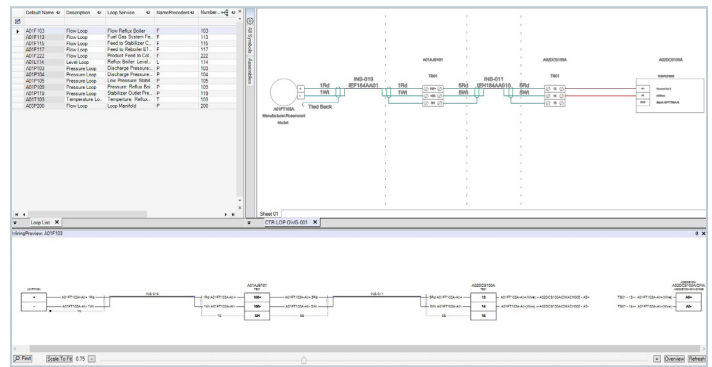
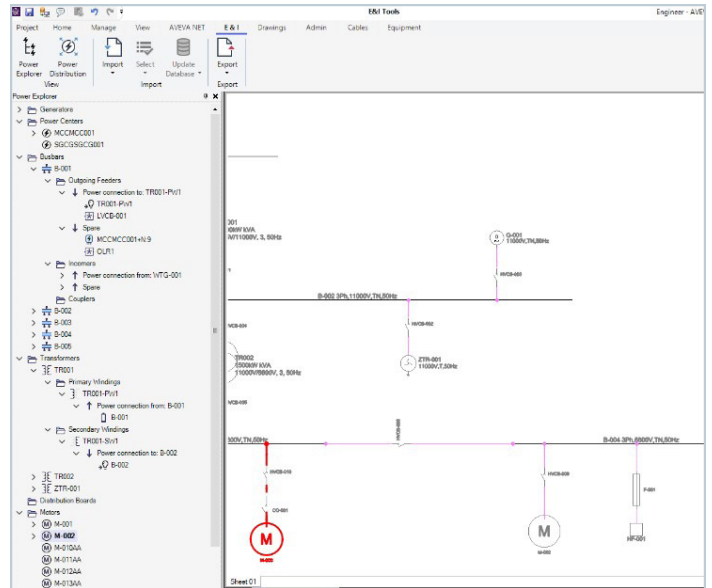


## Built-in graphical canvas

- A built-in graphical canvas gives your teams the tools to create 2D deliverables with a bi-directional link to consistent engineering data.
- Drag and drop engineering objects in an intuitive design environment.

## Streamline engineering and design outcomes

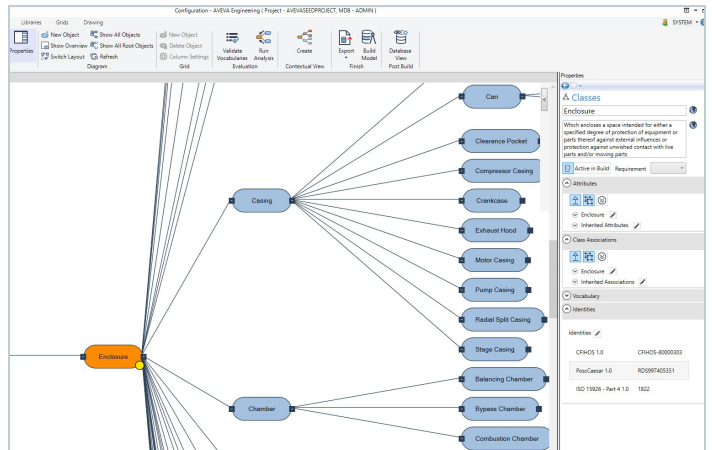
- Produce drawings automatically or manually.
- Set project standards and mandatory design rules.
- Create multiple and complex naming conventions.
- Configure data validation.
- Integrate directly with 3D models.
- Determine cable sizing.
- Reduce checking time.
- Integrate with procurement tools.
- Take advantage of the configurable library data.
- Create enclosure designs with templates.



## Business benefits

### More efficient engineering and design

- Deliver engineering projects faster.
- Reduce error-related costs.
- Create reports with native user-friendly reporting tools.





## Global work and shared administration

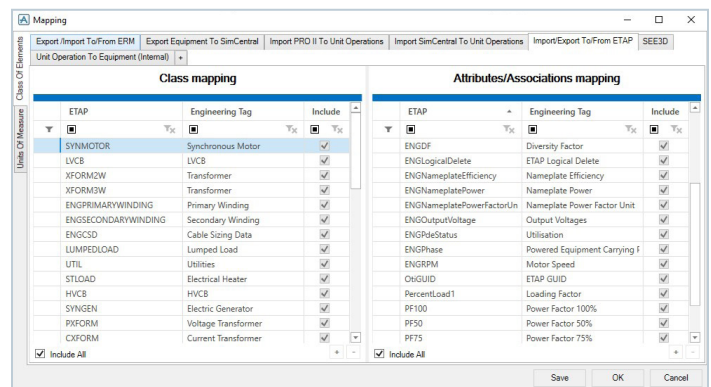
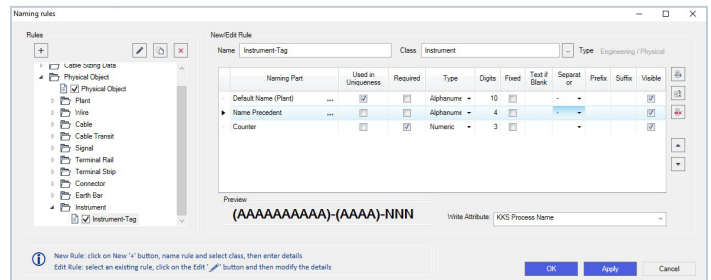
- Integrate and automatically synchronize data from distributed project teams.
- Save time and effort by integrating additional design tools.
- Reduce administration overheads by using a common platform.

## High-quality engineering deliverables

- Organize and optimize production of datasheets, equipment lists, and load lists.
- Unify disciplines which typically have their own catalog of materials for cables and cableways.
- Create consistency across engineering data and deliverables.
- Use intelligent graphical deliverables to reflect the underlying engineering design data accurately.
- Accurately generate key deliverables:
  - Electrical and instrumentation datasheets
  - Load lists
  - Key one-line diagrams
  - Single-line diagrams
  - Cable block diagrams
  - Termination drawings
  - Installation details
  - Cable schedules, including routing information
  - Bills of Materials (BoM)

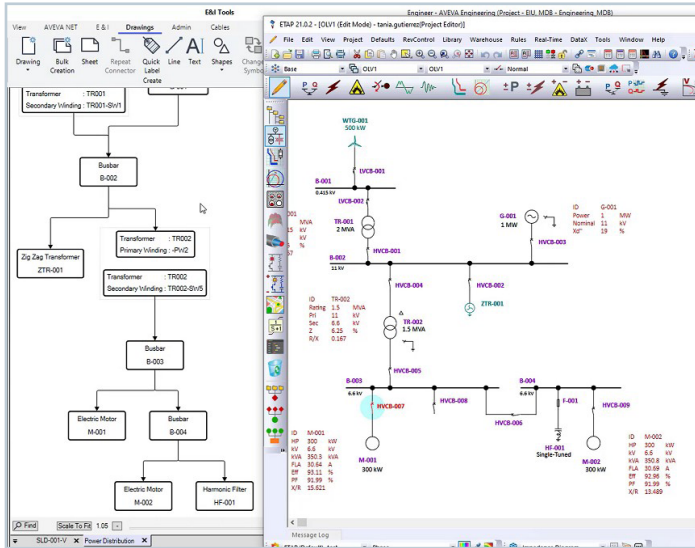
## Enhanced project management and governance

- Maintain project set-up and control with enforced mandatory design rules and project standards.
- Integrate with all industry-standard document management systems.
- Compare and highlight reports.

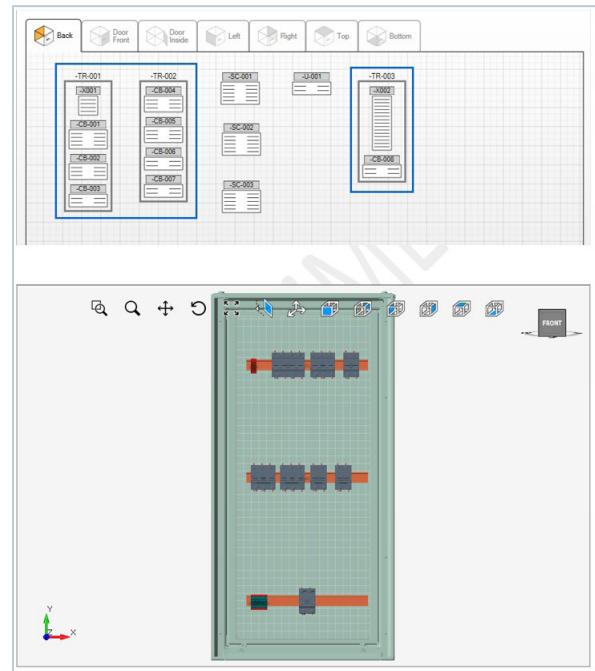


## ETAP Integration

- Integrate with the industry-leading electrical analysis tool.
- Initiate projects in either AVEVA Electrical and Instrumentation or ETAP and maintain data integrity between applications.



- Combine projects with AVEVA™ E3D Design to control the whole lifecycle of electrical design; from analysis and functional design to the physical layout.



## Connect your teams, data, and processes with the cloud

Grow sustainably with AVEVA Connect and transform faster, reduce costs and optimize at scale. Engineer smarter and operate better with our industrial cloud platform.

Leverage SaaS capabilities to create digital industrial hybrid architectures that maintain the robust capabilities of your applications.

Accelerate your time to value with secure industrial SaaS that is quick to deploy and easy to access and manage across any global enterprise.

For more information about AVEVA Electrical and Instrumentation and AVEVA Engineering, please contact your local AVEVA representative, or visit:

[aveva.com/en/products/electrical-instrumentation](https://aveva.com/en/products/electrical-instrumentation)

To learn more about AVEVA Connect please visit:

[aveva.com/en/perspectives/campaigns/industrial-cloud-software](https://aveva.com/en/perspectives/campaigns/industrial-cloud-software)

**AVEVA**

aveva.com

© 2022 AVEVA Group plc and its subsidiaries. All rights reserved.  
AVEVA and the AVEVA logo are a trademark or registered trademark of AVEVA Group plc in the U.S. and other countries.  
All product names mentioned are the trademarks of their respective holders.